



瑞祺丰新材料

Aluminum Artist, Aluminum Specialist

GUANGXI RUI QIFENG NEW MATERIAL CO., LTD.

Add: Pingguo Industrial Zone, Baise, Guangxi, China.

Sales Center: Room 1709, Building 2, No. 21,

Pingle Avenue, Liangqing District, Nanning, China

E-mail : info@aluminum-artist.com

Web: www.aluminum-artist.com



Aluminum Artist, Aluminum Specialist



广西瑞祺丰新材料有限公司

GUANGXI RUI QIFENG NEW MATERIAL CO., LTD.

Vendor for One-Stop Aluminum Profile Processing Solutions

www.aluminum-artist.com

CONTENT

1.OUR COMPANY.....	01
1.1 About Us.....	01
1.2 Rui Qifeng History.....	02
1.3 Qualification And Honors.....	03
1.4 Factory Workshop.....	04
1.5 Quality Controlling.....	09
2. OUR PRODUCTS.....	10
2.1 Aluminum Heat Sinks	11
2.2 Industrial Aluminium Profiles	15
2.3 Aluminium Profiles For Window And Doors.....	19
2.4 Curtain Wall Aluminum Profiles.....	25
3. OUR PROJECTS.....	28
3.1 Building Construction Project.....	28
3.2 Heat Sink Project.....	30
3.3 Industrial Aluminium Profiles Project.....	31
4. WHY CHOOSE US ?.....	32
5. OUR MARKET.....	32



ABOUT US

Guangxi Rui Qifeng New Material Co., Ltd. is an enterprise with 20 years of experience in aluminum extrusion, providing one-stop aluminum processing solutions for global customers.

The factory is located in Pingguo, Guangxi, which is rich in aluminum resources. We have long-term close cooperation with CHALCO, and has a complete aluminum industry chain, covering aluminum alloy research and development, aluminum rod casting, mold design, profile extrusion, surface treatment and deep processing, and other modules. The products are used in various industries such as architectural aluminum profiles, aluminum heat sinks, green energy, automotive, electronic appliances and so on. Our annual production capacity can reach up to 100,000 tons.

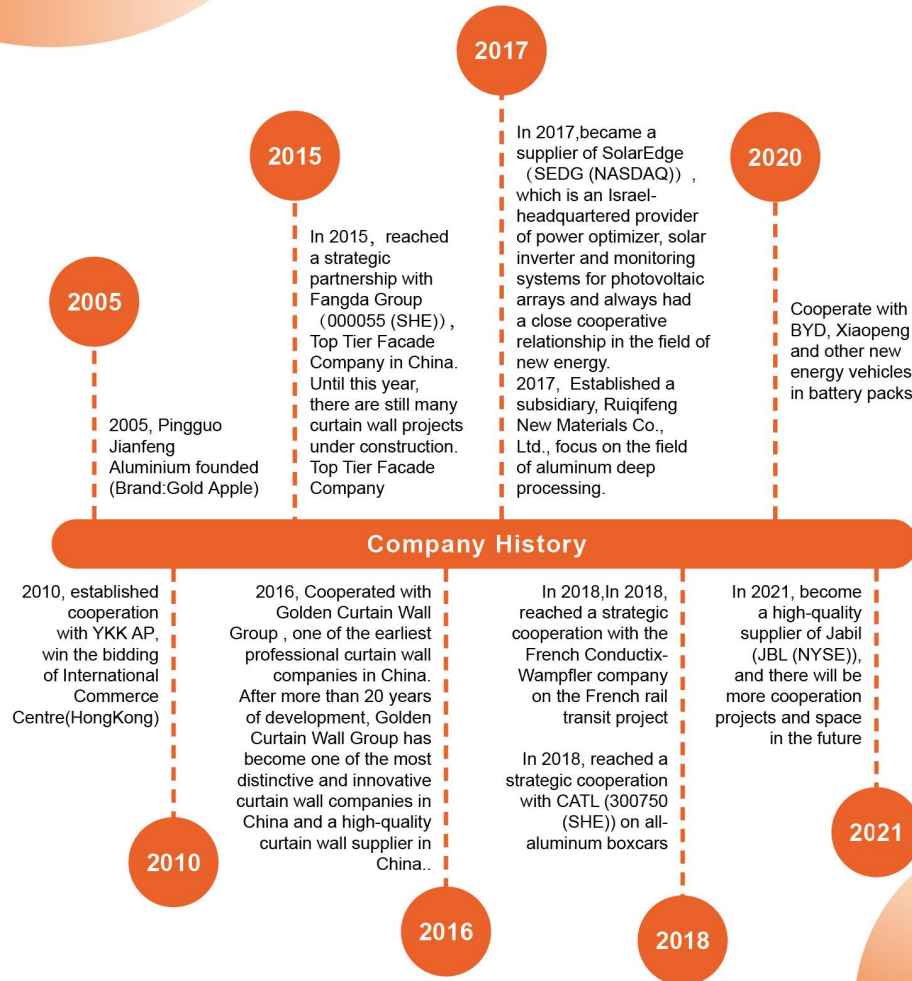
The company adopts standardized management and evaluation system, and has successively introduced ISO9001 quality management system, ISO14001 environmental management system and China CQM product quality. Meanwhile, we have obtained more than 30 national patents, and our products are in a leading position in the international market.

We are market-oriented and regard "100% ex-factory qualified, 100% customer satisfaction" as our goal, our products are exported to 50 countries and regions including North America, South America, Africa, Middle East, and Southeast Asia.

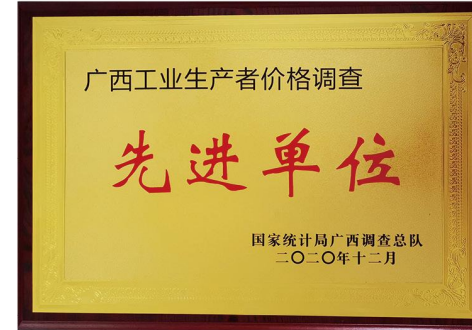
Let us create a sustainable and bright future together!

TIMELINE RUI QIFENG HISTORY

2005 - 2023



QUALIFICATION & HONOR



The honor is not an approval to our past but also an encouragement to our present from the society,expectance to our future as well. We are well aware of a long way full of responsibility to go.

FACTORY WORKSHOP

Melting & Casting Workshop



Casting Furnace

Homogeneous Furnace

Advanced casting furnace can produce aluminum alloy series 6&7, and various dimension of aluminum rod.

Extruding Workshop



Granco Clark Traction Machine

Mold Design Center

At Ruiqifeng, we make our own dies. We also buy dies from independent toolmakers. We develop design aids for effective extrusion die design, we correct dies to optimize productivity and we research die performance.



Mold Design-1

Mold Design-2

Existing mold stock

Possessed of 600-5000 tons advanced extruder, and equipped with Granco Clark traction machine(made in USA), can produce a variety of high precision profiles which circumscribe can up to 510mm at most.



Extruding Workshop-1

Extruding Workshop-2

5000 Ton Extruder

FACTORY WORKSHOP

Powder Coating Workshop



Swiss Stand Powder Coating Equipment

Japan Horizontal PVDF Coating Equipment

Swiss Horizontal Powder Coating Equipment

CNC Processing Center

Utilizing advanced CNC, Lathes, Milling Machine Drilling Machine, and EDM etc machines produce various of high precision and sophisticated moulds.



CNC Processing Center

Anodizing Workshop

Processed of advanced oxygenation & electrophoresis production lines, can produce oxygenation, electrophoresis, polishing and other series products.



Anodizing

Well-equipped warehouse and logistics system

Rui Qifeng can satisfy with the different clients' specified requirement in packing and shipping. We are closely cooperating with many forwarders and shipping companies to guarantee a safe and on time delivery.



Finished Goods Warehouse

Packaging

Logistic Supply-Chain

Transportation network by sea, land and air

FACTORY WORKSHOP

Deep Processing Workshop



The Rui Qifeng team can provide you with the most appropriate system solutions, so as to improve productivity, repeatability and process control.

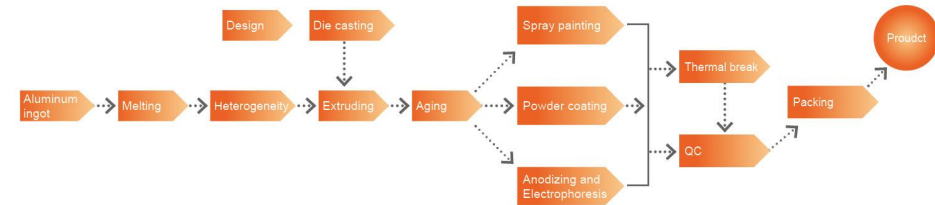
QUALITY CONTROLLING

Establishing severest quality supervision and pursuit perfect product belief are all Rui Qifeng person's reputation and responsibility.

Perfect production process, strict closed-loop management system, advanced instrument testing equipment to ensure the quality of our products.



Producing Process



Rui Qifeng possesses of all kinds of CNC machine, such as CNC engraving machine, CNC double head saw, digital automatic horizontal saw machine, CNC punch press, five axis CNC machining center, etc.

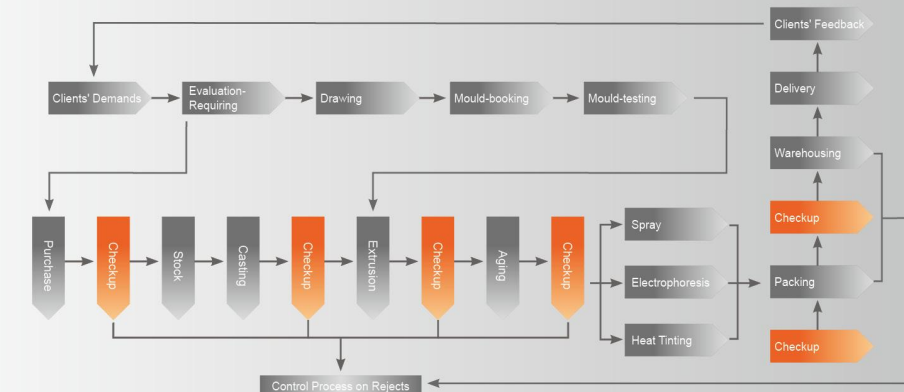


CNC machining Center

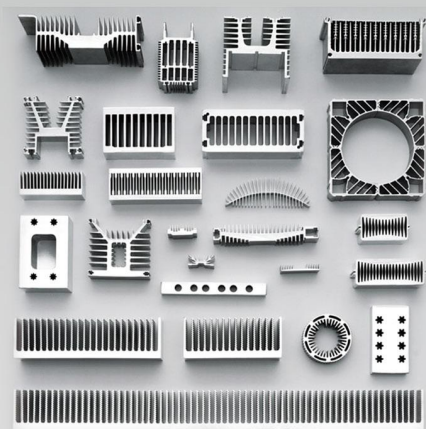
CNC Engraving

3D Measuring Machine

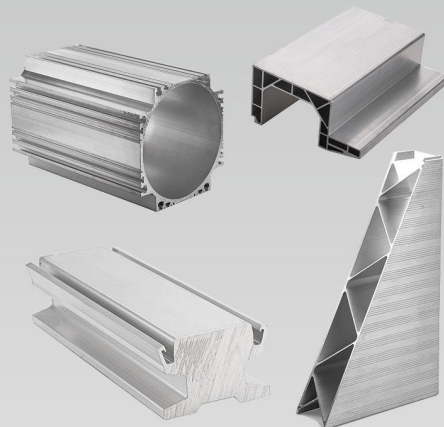
Figure of Technical Process and Producing Process



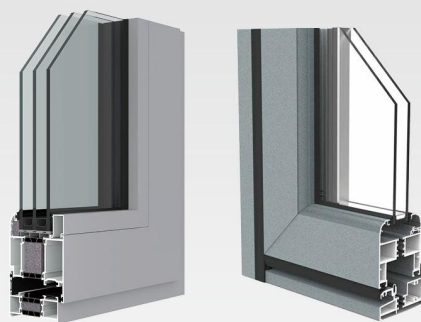
OUR PRODUCTS



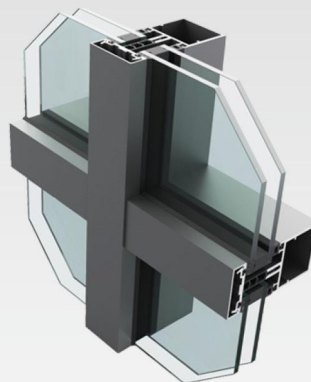
Aluminum Heat Sinks



Industrial Aluminium Profiles



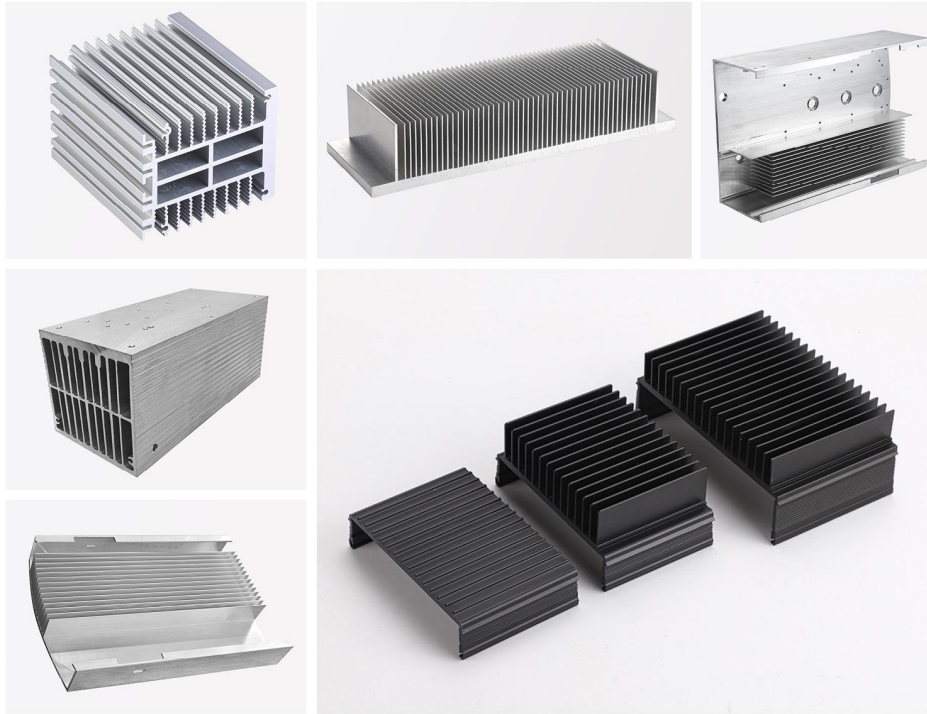
Aluminium Profiles for Window and Doors



Curtain Wall Aluminum Profile

Aluminum Heat Sink Application



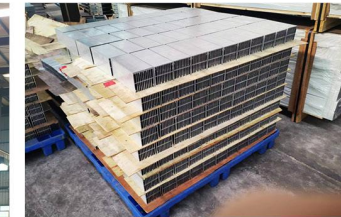
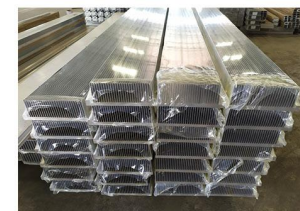


Ruiqifeng provides a wide range of sizes and configurations for extruded aluminum heat sinks. You can purchase the aluminum extruded heat sink you need. If you can't find a product that exactly matches your needs, we can work with you to design customized heat sink extrusion to meet your needs.

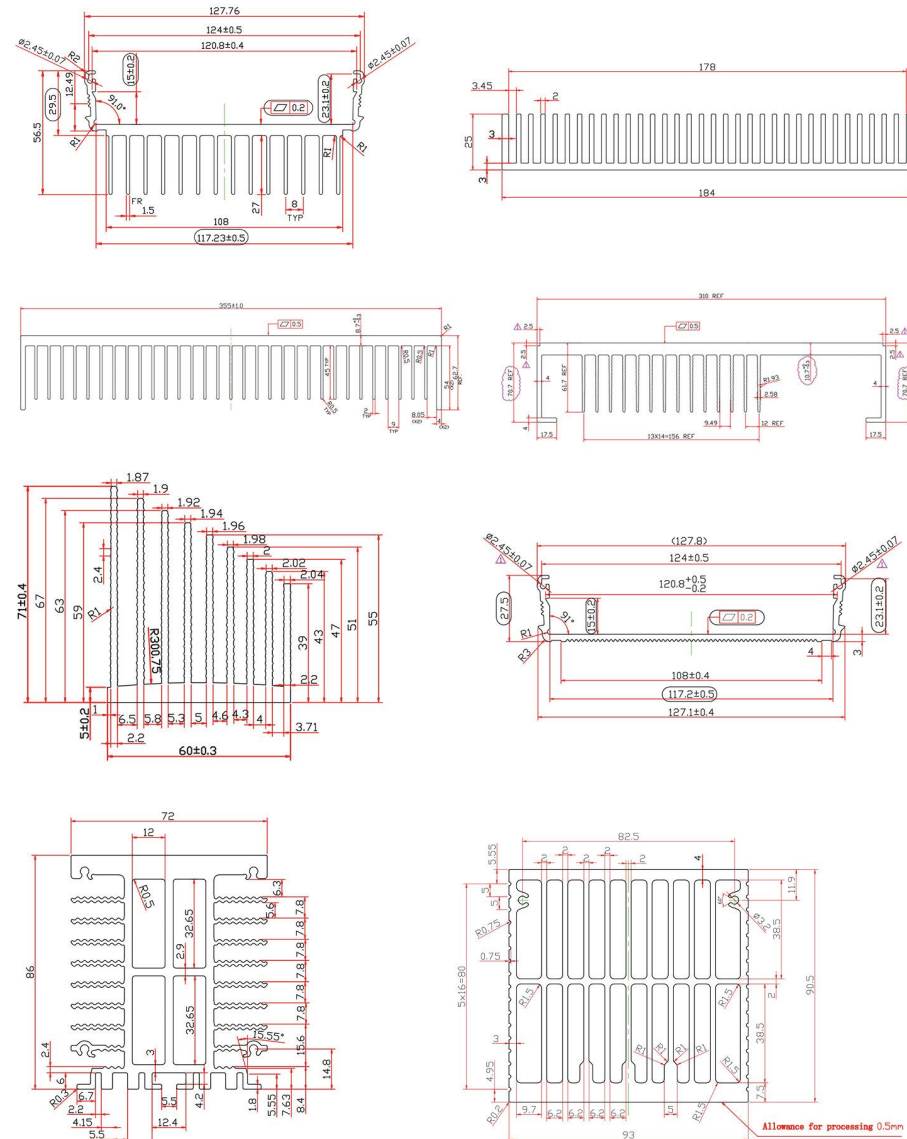
Ruiqifeng extruded heat sinks are widely used in a variety of industries, including inverters, Electronics, Green Energy, information technology, consumer, medical, LED lighting and power conversion, and so on.

The main advantages of Ruiqifeng aluminum extruded heat sinks are as follows:

1. One-stop design & manufacturing solutions save your whole cost.
2. Standard existing extruded heat sink with standard size save your initial cost.
3. Fast shipment of standard extruded heat sink size.
4. Thousands available molds for your alternative.
5. Customized your own design with our latest tooling technology.



Heat Sink Drawing Design



Industrial Aluminum Profile Application

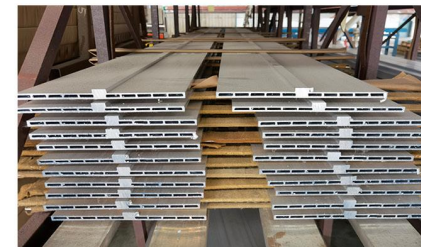




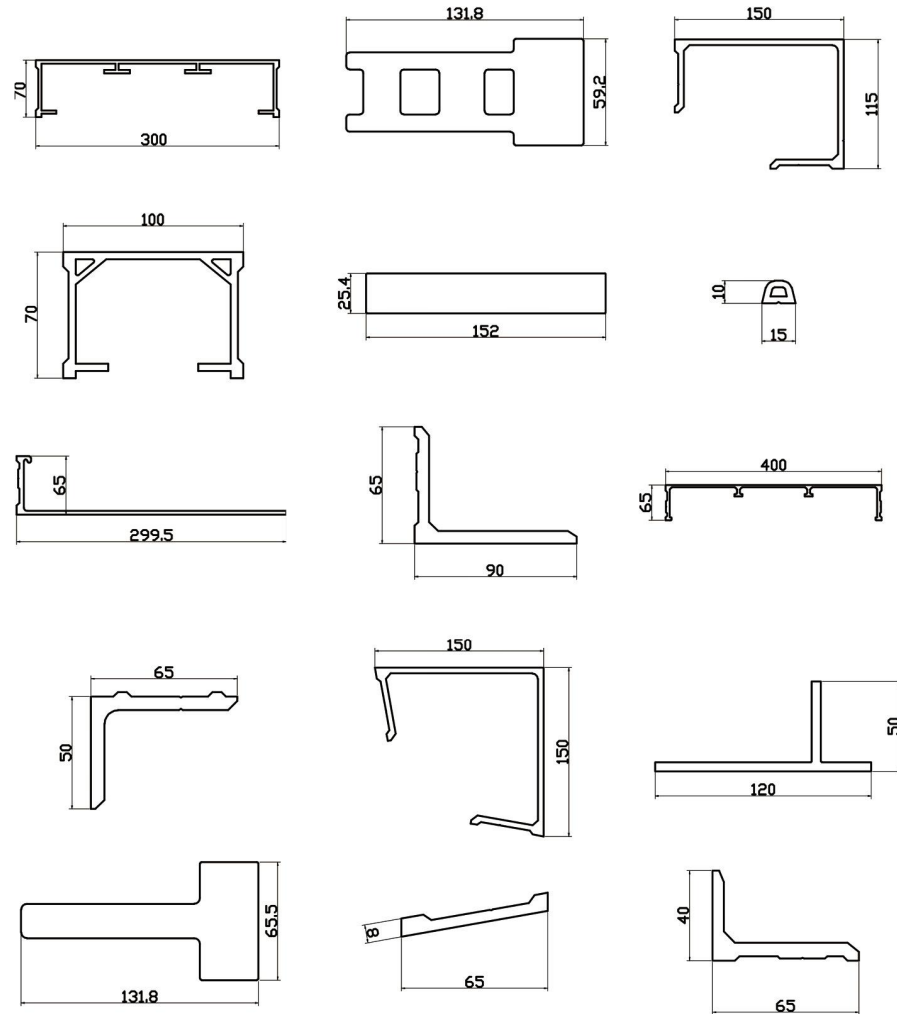
With the advantages of the whole industrial chain, Ruiqifeng aims at the "high-end, specialized" route. In the field of industrial aluminum profiles, Ruiqifeng has selected several development areas. One is in the field of lightweight automobiles. Mainly, such as anti-collision beams, power battery trays, etc.; The second is solar inverter radiators, electronic appliances, etc. Ruiqifeng has accumulated quite a lot of technology, experience and partners in this area.

Our advantages in the New Energy Vehicles Battery Tray:

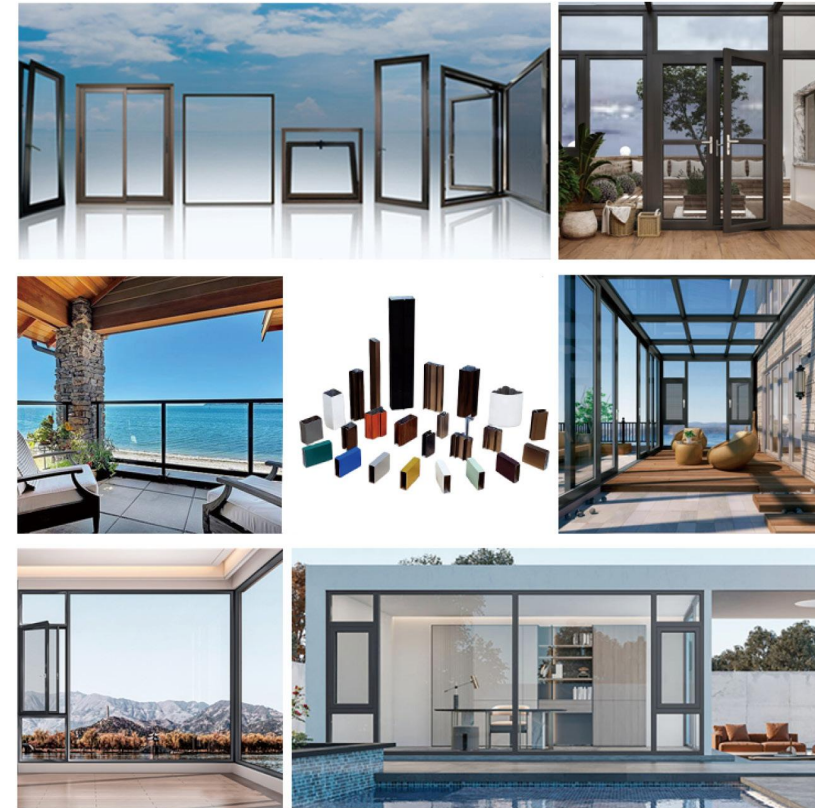
1. Technician team: over 20 years of experience in Aluminium extrusion for industrial applications.
2. The rich source of Aluminium ingot locally.
3. Export staff embodied fluent English communication skills, and good knowledge of aluminium extrusion industries, and exports. Stable and reliable to help to sort out all problems.
4. Wide range of Aluminium alloy materials available.
5. Undertake any quality problems unconditionally.



Industrial Aluminum Profile Drawing Design



Aluminum Profile For Windows and Doors

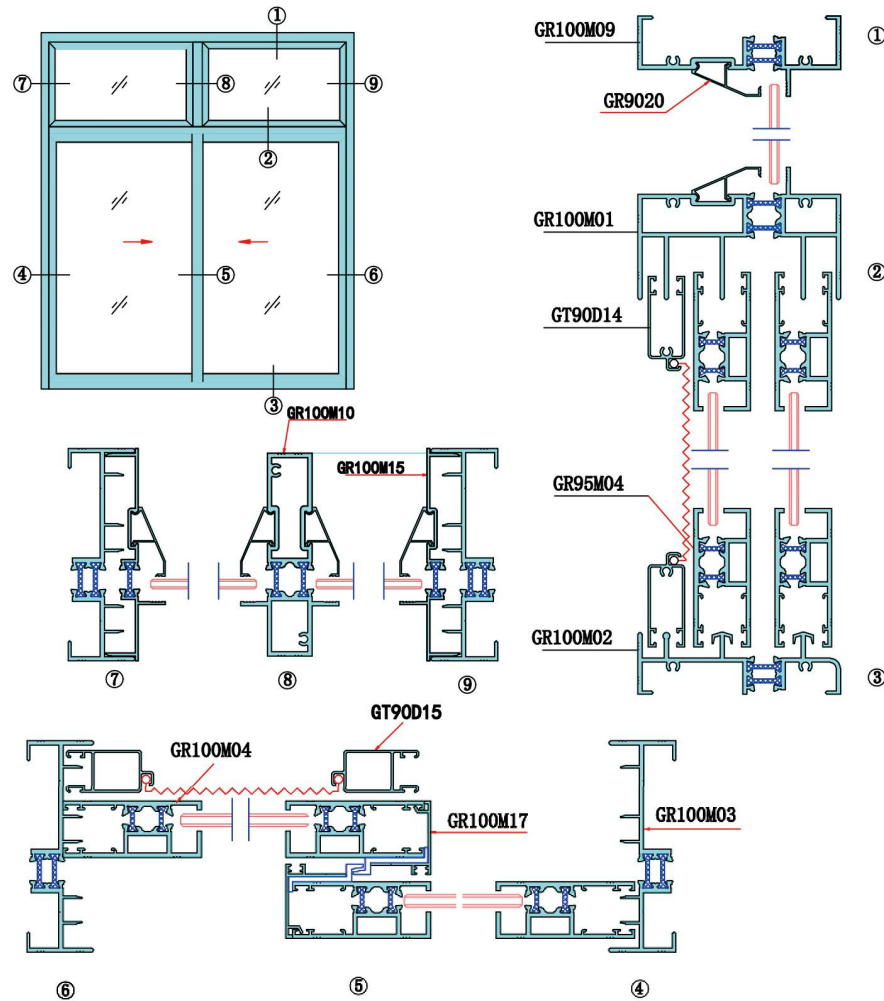


Why choose aluminium for doors, windows or building openings?

Aluminium doors and windows are strong, durable and highly corrosion-resistant.

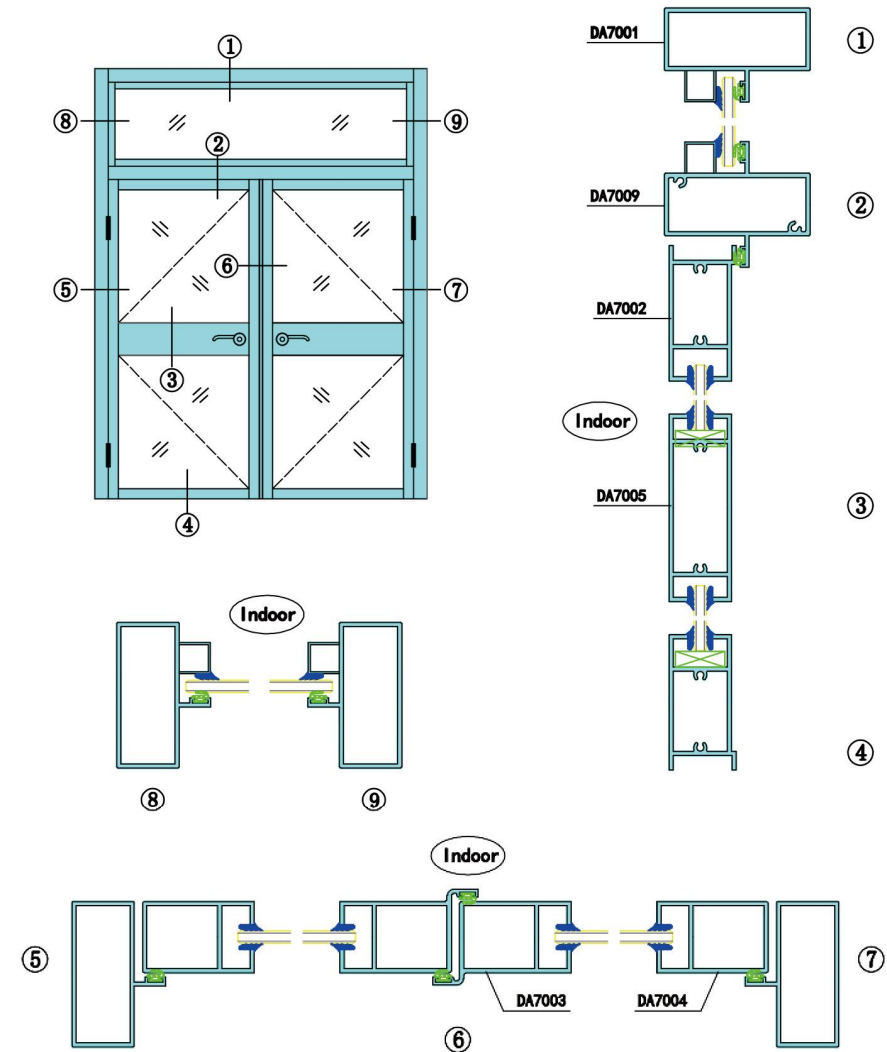
Doors and windows made from aluminium offer a sustainable, energy efficient and lightweight alternative to conventional materials. Compared to alternative frames such as wood, aluminium products don't need regular painting or staining to keep them weather-proof. Our aluminium door and window systems can be specified in a range of finishes and treatments, desirable and virtually maintenance free in almost any environment.

Aluminum Window Drawing Design



*The drawings are chosen from our system which contains thousands of ODM solution from all over the world.

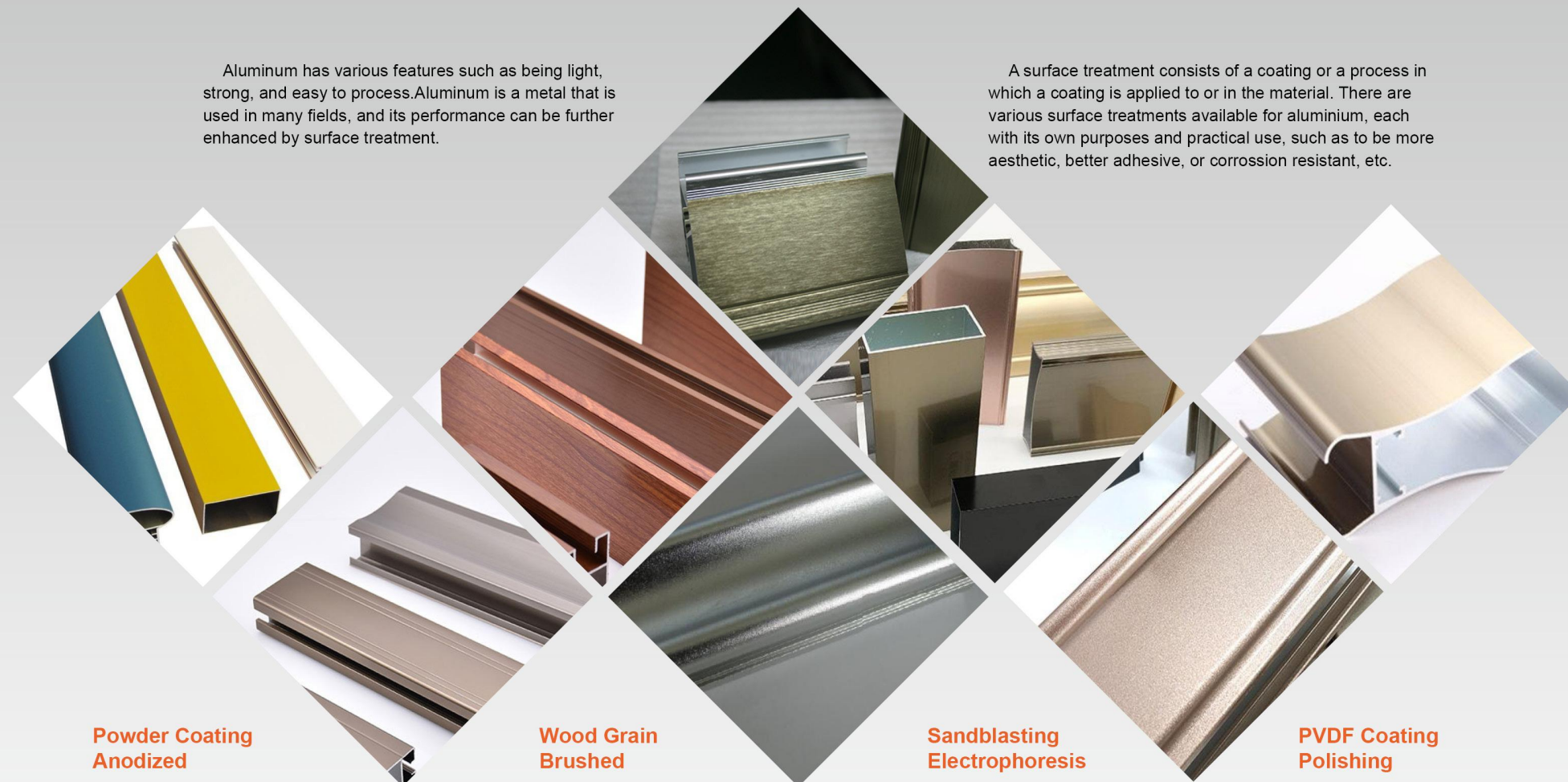
Aluminum Door Drawing Design



Aluminum Profile Surface Treatment

Aluminum has various features such as being light, strong, and easy to process. Aluminum is a metal that is used in many fields, and its performance can be further enhanced by surface treatment.

A surface treatment consists of a coating or a process in which a coating is applied to or in the material. There are various surface treatments available for aluminium, each with its own purposes and practical use, such as to be more aesthetic, better adhesive, or corrosion resistant, etc.



**Powder Coating
Anodized**

**Wood Grain
Brushed**

**Sandblasting
Electrophoresis**

**PVDF Coating
Polishing**

Powder Coating Color Choices

RAL 1000		RAL 4007		RAL 7008	
RAL 1001		RAL 4008		RAL 7009	
RAL 1002		RAL 4009		RAL 7010	
RAL 1003		RAL 5000		RAL 7026	
RAL 1016		RAL 5009		RAL 7030	
RAL 1017		RAL 5010		RAL 7031	
RAL 1018		RAL 5014		RAL 7032	
RAL 1024		RAL 5015		RAL 9010	
RAL 1027		RAL 5017		RAL 9016	
RAL 1028		RAL 5018		RAL 7035	
RAL 1032		RAL 5024		RAL 7036	
RAL 1033		RAL 6000		RAL 7042	
RAL 1034		RAL 6001		RAL 7043	
RAL 2000		RAL 6002		RAL 7044	
RAL 2001		RAL 6015		RAL 7046	
RAL 2002		RAL 6016		RAL 8000	
RAL 2003		RAL 6017		RAL 8001	
RAL 2004		RAL 6018		RAL 8002	
RAL 2008		RAL 6019		RAL 8023	
RAL 3000		RAL 6027		RAL 8024	

* Above are printing colors, manufacturing is subject to the actual color swatches.

Curtain Wall Aluminum Profile



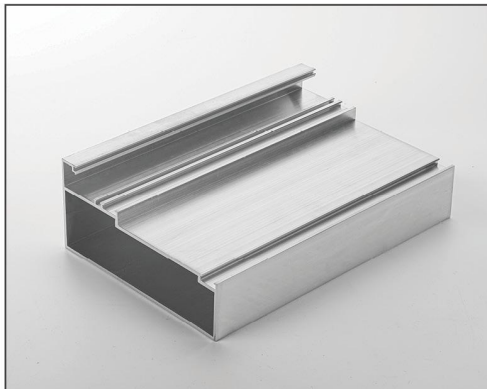
So far, aluminum curtain wall has been dominant in metal curtain walls. Lightweight materials reduce the load on buildings and provide good conditions for high-rise buildings. The aluminum curtain wall has excellent water-proof, anti-fouling, and anti-corrosion performance, which ensures the long-lasting newness of the exterior surface of the building.

As one of the most experienced aluminum curtain wall suppliers in China, Rui Qifeng sells various high-quality curtain wall products all over the world and recognized by the market in our projects.

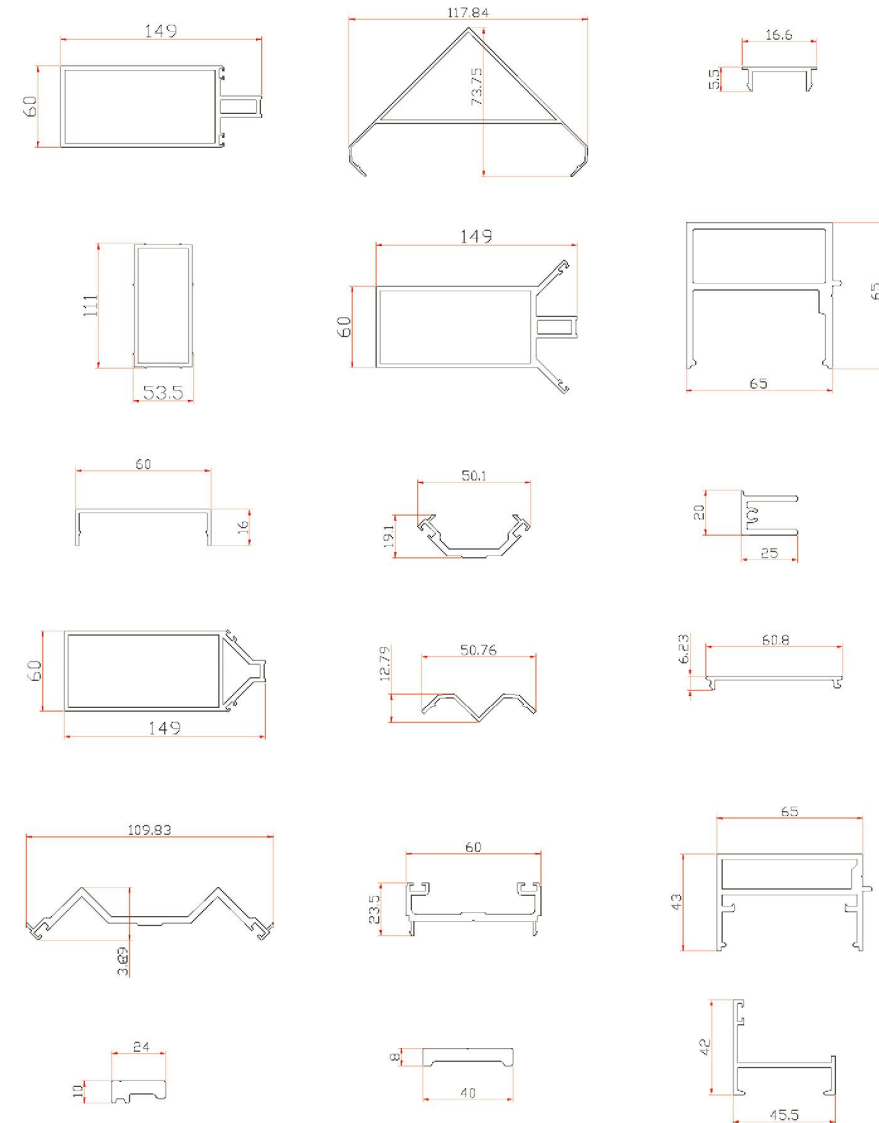
Aluminum extrusions from our architectural systems are available in a variety of finishing which contains mill finish, anodized, electrophoresis, powder coating, PVDF coating and wood grain. If you are looking for trustworthy aluminum curtain wall suppliers, don't hesitate to contact us.



We have the most professional engineering team. If our existing unitized aluminium facade systems are not suitable for your special purpose, our experienced engineers can also help you to design your own curtain wall aluminium profiles and realize custom aluminium extrusions.



Curtain Wall Profile Drawing Design



OUR PROJECT

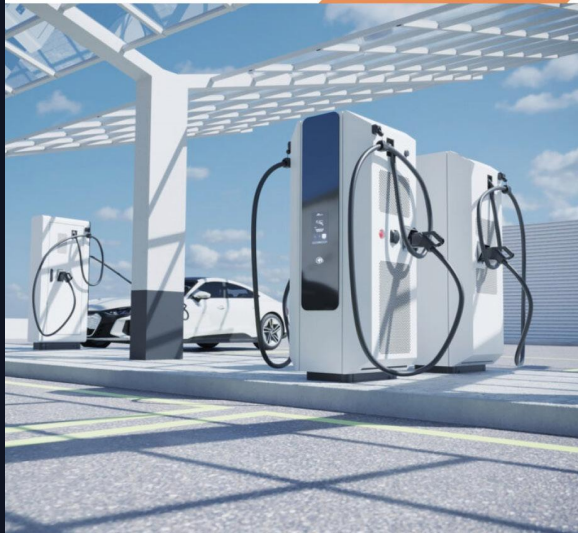
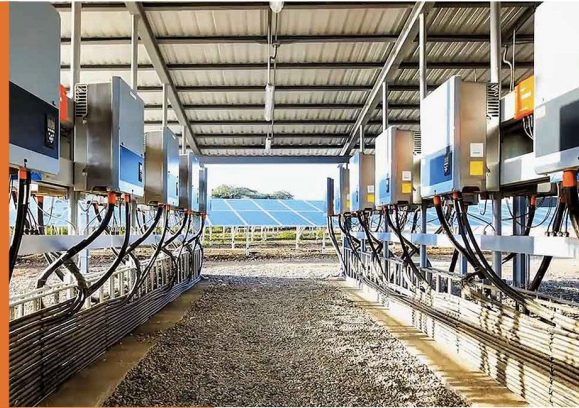
Building Construction Projects



Heat Sinks Project

Solar Energy Inverter

As the core of the photovoltaic power station, the inverter's life affects the normal operation of the entire power station, and the heat dissipation performance of the inverter is crucial to the life of the device. The components in the inverter have a rated operating temperature. When the inverter continues to work, the heat of the components keeps gathering inside the cavity, and the temperature will become higher and higher. Aluminum heat sink will solve this problem perfectly.



Car Charging Station

As the low-carbon economy has become the main direction of future development, new energy vehicles have also emerged as the times require. New energy vehicles have many advantages such as energy saving, emission reduction, and environmental protection. How to quickly replenish electric energy for new energy vehicles in a relatively short period of time has very high requirements for charging stations. The charging demand is of course as fast as possible. However, as the charging speed increases, the current and voltage will increase linearly, which will lead to an increase in the power of the inductance module of the charging pile, which will easily cause safety accidents. Therefore, it is very important to use a radiator to dissipate heat.

Industrial Aluminum Profiles Project



1 Custom made

According to the characteristics of logistics operation and the needs of use, develop brand new exclusive car model.

2 Lightweight car body, low carbon, environmental friendly.

The whole boxcar structure uses high strength Aluminum profile, under the premise of ensuring the strength and safety performance of vehicles, reduce the vehicle kerb mass as much as possible, so as to improve the dynamic, achieve pure electric drive and zero emissions.

3 Recyclable repeatedly.

Aluminum is not only high strength and rigidity, but also can be recycled, it has the longest metal life cycle. Therefore, the aluminum carriage has good safety performance, long service life and low cost.

WHY CHOOSE US

Guangxi bauxite resources with the largest reserves and best quality in the country.
Long-term close cooperation with the famous Guangxi Branch of CHALCO.
Possess high-quality aluminum liquid raw materials.



OUR MARKET

We're market-oriented, we carve every product with a craftsmanship spirit and win the trust of every customer with professional service. Such as Solar Edge, JABIL, CATL, YKK AP, etc.

Our products have many varieties, beautiful appearance, high precision and excellent performance, and they are exported to dozens of countries and regions in North America, South America, Europe, Africa, the Middle East, East Asia, Southeast Asia and so on.

