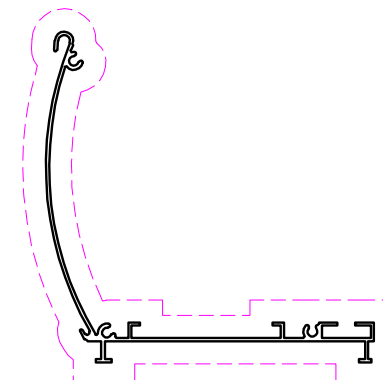
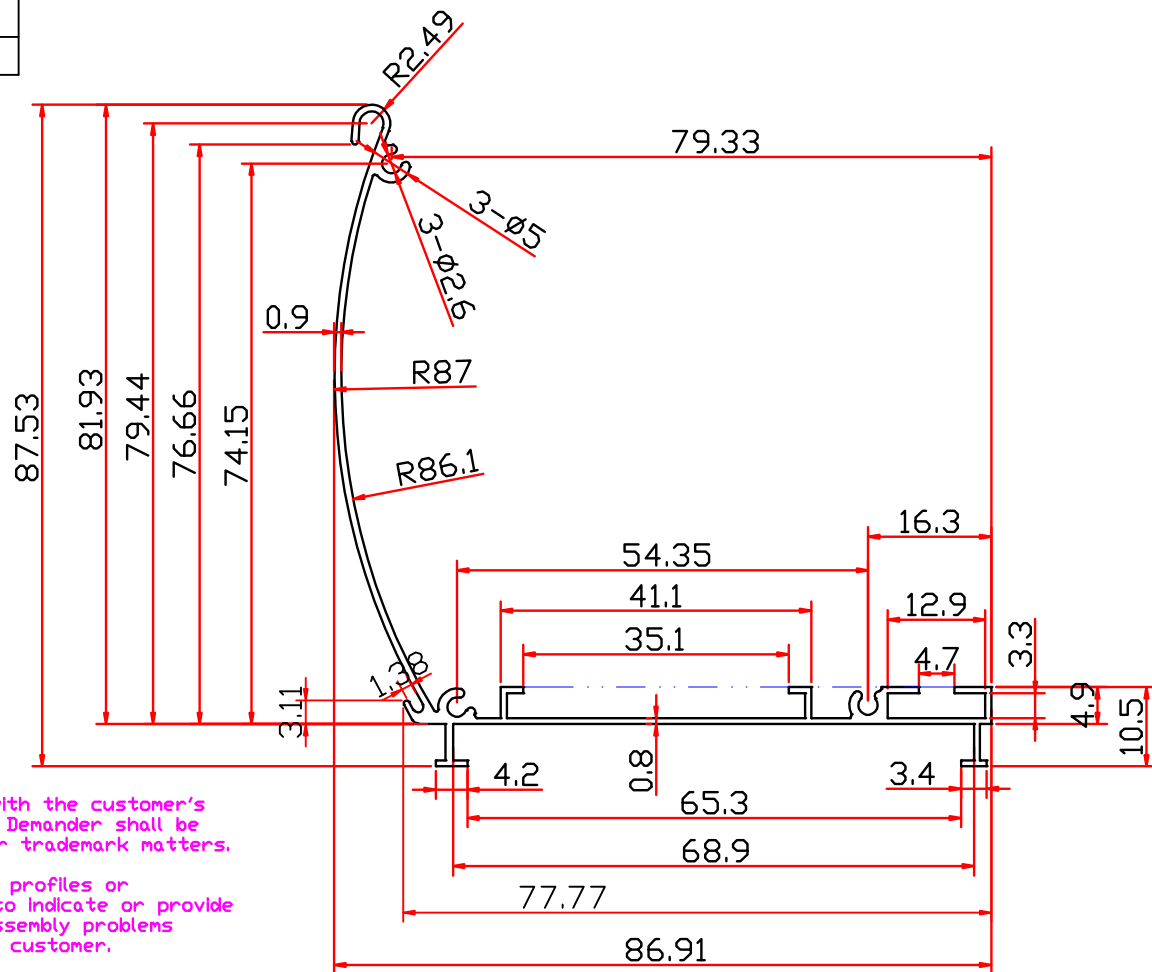


Mark of modified	Modifer	Date



1:2

Exposed Surface - - - - -

1. This drawing is consistent with the customer's 'samples / drawings', and the Demander shall be responsible for any patent or trademark matters.

2. If it is matched with other profiles or accessories, it is necessary to indicate or provide accessories. Otherwise, the assembly problems caused shall be borne by the customer.

3. The customer confirms the drawings, including confirming and approving the drawings, tolerances, acceptance standards, weight, decorative surface area and other information on the drawings.

Area of Exposed Surface: 0.4587 m<sup>2</sup>/m

Unspec. Thickness: 0.8 mm in Unspec. Radius: R0.3 mm in

Drawn by	LCQ
Date	2022.07.06
Checked by	
Date	

Sectional Area	211.80 mm <sup>2</sup> in <sup>2</sup>	Alloy/Temper	6063-T5	Confirmed by		Date	
Theory Weight	0.576 kg/m Lb/ft	Scale	1:1	Series	CKRMC	Profile	
Out Perimeter	458.65 mm in	Finish		Delivery	Theory weight	8 / Bundle	
Circumscribed About circle	Ø121 mm in	Standard	GB 5237.1-2017	Precision	High Pre-cision	Edition	A

- 1. \* Important dimension.
- 2. ( ) Referenced dimension.

**GENERAL TOLERANCES**

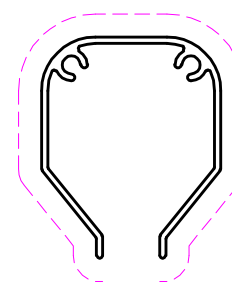
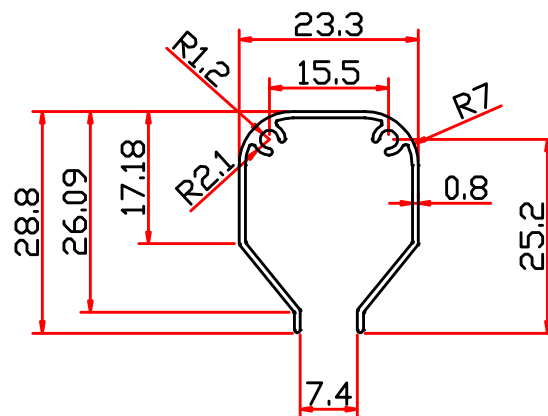
DIMENSION	LENGTH			BETWEEN HOLES AND PINS	ANGLES	RADIUS
	0-30	30-120	120-			
TOLERANCE	±0.2	±0.3	±0.4	±0.1	±0.5°	±0.1

CUSTOMER		Customer Draw No.	
Signed by		Our Draw No.	CKRMC306



**广西瑞祺丰新材料有限公司**  
Guangxi RuiQiFeng New Material Co.,Ltd.  
TEL: 13550900771 E-mail: info@aluminum-artist.com

Mark of modified	Modifier	Date



1:1

Exposed Surface - - - - -

1. This drawing is consistent with the customer's "samples / drawings", and the Demander shall be responsible for any patent or trademark matters.

2. If it is matched with other profiles or accessories, it is necessary to indicate or provide accessories. Otherwise, the assembly problems caused shall be borne by the customer.

3. The customer confirms the drawings, including confirming and approving the drawings, tolerances, acceptance standards, weight, decorative surface area and other information on the drawings.

Area of Exposed Surface: 0.1066 m<sup>2</sup>/m

Unspec. Thickness: 0.8 mm in Unspec. Radius: R0.3 mm in

Drawn by LCQ  
Date 2022.07.06

Checked by  
Date

Confirmed by  
Date

Series CKRMC Profile appellation

Delivery Theory weight 24/Bundle

Precision High Pre-cision Edition A

Sectional Area	76.30 mm <sup>2</sup> in <sup>2</sup>	Alloy/Tempor	6063-T5
Theory Weight	0.208 kg/m Lb/ft	Scale	1:1
Out Perimeter	177.734 mm in	Finish	
Circumscribed About circle	ø31 mm in	Standard	GB 5237.1-2017

- \* Important dimension.
- ( ) Referenced dimension.

GENERAL TOLERANCES

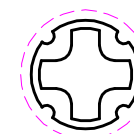
DIMENSION	LENGTH			BETWEEN HOLES AND PINS	ANGLES	RADIUS
	0-30	30-120	120-			
TOLERANCE	±0.2	±0.3	±0.4	±0.1	±0.5°	±0.1

CUSTOMER	Customer Draw No.
Signed by	Our Draw No. CKRMC307

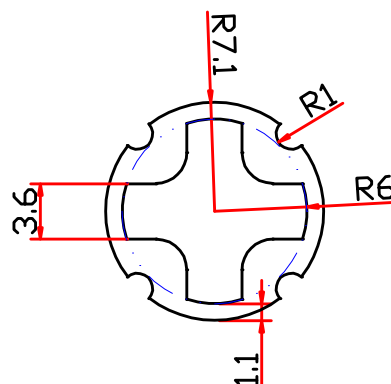


广西瑞祺丰新材料有限公司  
Guangxi RuiQiFeng New Material Co.,Ltd.  
TEL: 13908000771 E-mail: info@shunfeng-artist.com

Mark of modified	Modifier	Date



1:1



Exposed Surface - - - - -

1. This drawing is consistent with the customer's "samples / drawings", and the Demander shall be responsible for any patent or trademark matters.

2. If it is matched with other profiles or accessories, it is necessary to indicate or provide accessories. Otherwise, the assembly problems caused shall be borne by the customer.

3. The customer confirms the drawings, including confirming and approving the drawings, tolerances, acceptance standards, weight, decorative surface area and other information on the drawings.

Area of Exposed Surface: 0.0486 m<sup>2</sup>/m

Drawn by LCQ  
Date 2022.07.06

Unspec. Thickness: 1.1 mm in Unspec. Radius: R0.3 mm in

Checked by  
Date

Confirmed by  
Date

Sectional Area 76.713 mm<sup>2</sup> in<sup>2</sup> Alloy/Temp 6063-T5

Theory Weight 0.209 kg/m Lb/ft Scale 2:1

Series CKRMC Profile appellation

Out Perimeter 48.606 mm in Finish

Delivery Theory weight 24/Bundle

Circumscribed About circle ø14.2 mm in Standard GB 5237.1-2017

Precision High Pre-cision Edition A

- \* Important dimension.
- ( ) Referenced dimension.

GENERAL TOLERANCES

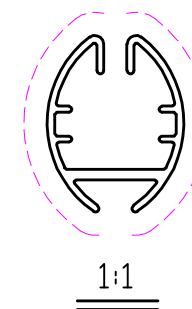
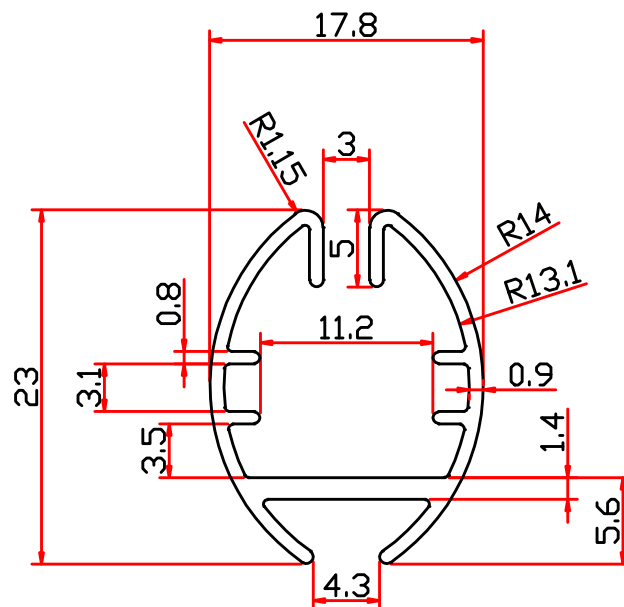
DIMENSION	LENGTH			BETWEEN HOLES AND PINS	ANGLES	RADIUS
	0-30	30-120	120-			
TOLERANCE	±0.2	±0.3	±0.4	±0.1	±0.5°	±0.1

CUSTOMER	Customer Draw No.
Signed by	Our Draw No. CKRMC308



广西瑞祺丰新材料有限公司  
Guangxi RuiQiFeng New Material Co., Ltd.  
TEL: 13908080771 E-mail: info@huiqifeng-artist.com

Mark of modified	Modifier	Date



Exposed Surface - - - - -

1. This drawing is consistent with the customer's "samples / drawings", and the Demander shall be responsible for any patent or trademark matters.

2. If it is matched with other profiles or accessories, it is necessary to indicate or provide accessories. Otherwise, the assembly problems caused shall be borne by the customer.

3. The customer confirms the drawings, including confirming and approving the drawings, tolerances, acceptance standards, weight, decorative surface area and other information on the drawings.

Thickness	Solid	$\pm 0.13$ mm in
Tolerance	Hollow	$\pm 0.21$ mm in

1. \* Important dimension.
2. ( ) Referenced dimension.

**GENERAL TOLERANCES**

DIMENSION	LENGTH			BETWEEN HOLES AND PINS	ANGLES	RADIUS
	0-30	30-120	120-			
TOLERANCE	$\pm 0.2$	$\pm 0.3$	$\pm 0.4$	$\pm 0.1$	$\pm 0.5^\circ$	$\pm 0.1$

CUSTOMER	Customer Draw No.	Our Draw No.	CKRMC309
Signed by			



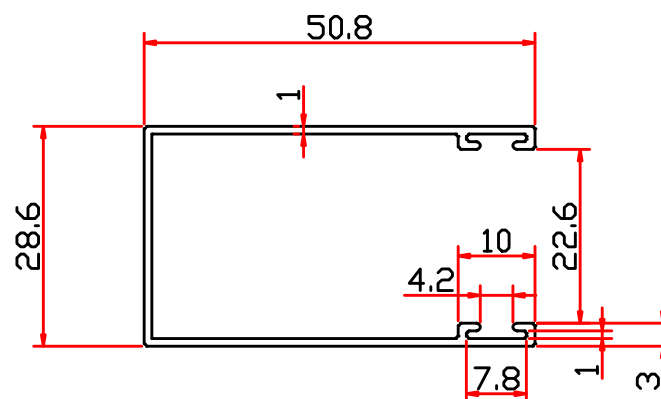
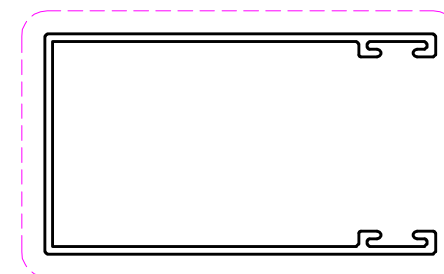
**广西瑞祺丰新材料有限公司**  
Guangxi Ruiqi Feng New Material Co., Ltd.  
TEL: 13989880771 E-mail: info@shunfeng-artist.com

Area of Exposed Surface:  $0.0979 \text{ m}^2/\text{m}$

Unspec. Thickness:  $0.9 \text{ mm}$  in Unspec. Radius:  $R0.3 \text{ mm}$  in

Sectional Area	80.828 mm <sup>2</sup> in <sup>2</sup>	Alloy/Tempor	6063-T5	Drawn by	LCQ	Date	2022.07.06
Theory Weight	0.220 kg/m Lb/ft	Scale	2:1	Checked by		Date	
Out Perimeter	163.238 mm in	Finish		Confirmed by		Date	
Circumscribed About circle	$\phi 24$ mm in	Standard	GB 5237.1-2017	Series	CKRMC	Profile appellation	
				Delivery	Theory weight	22	Bundle
				Precision	High Pre-cision	Edition	A

Mark of modified	Modifier	Date



1:1

Exposed Surface - - - - -

1. This drawing is consistent with the customer's "samples / drawings", and the Demander shall be responsible for any patent or trademark matters.

2. If it is matched with other profiles or accessories, it is necessary to indicate or provide accessories. Otherwise, the assembly problems caused shall be borne by the customer.

3. The customer confirms the drawings, including confirming and approving the drawings, tolerances, acceptance standards, weight, decorative surface area and other information on the drawings.

Thickness	Solid	$\pm 0.13$ mm in
Tolerance	Hollow	$\pm 0.21$ mm in

- \* Important dimension.
- ( ) Referenced dimension.

**GENERAL TOLERANCES**

DIMENSION	LENGTH			BETWEEN HOLES AND PINS	ANGLES	RADIUS
	0-30	30-120	120-			
TOLERANCE	$\pm 0.2$	$\pm 0.3$	$\pm 0.4$	$\pm 0.1$	$\pm 0.5^\circ$	$\pm 0.1$

CUSTOMER	Customer Draw No.	Our Draw No.	CKRMC310
Signed by			



**广西瑞祺丰新材料有限公司**  
Guangxi RuiQiFeng New Material Co., Ltd.  
TEL: 13980800771 E-mail: info@shunfeng-artist.com

Area of Exposed Surface:  $0.1709 \text{ m}^2/\text{m}$

Unspec. Thickness:  $1.0 \text{ mm}$  in Unspec. Radius:  $R0.3 \text{ mm}$  in

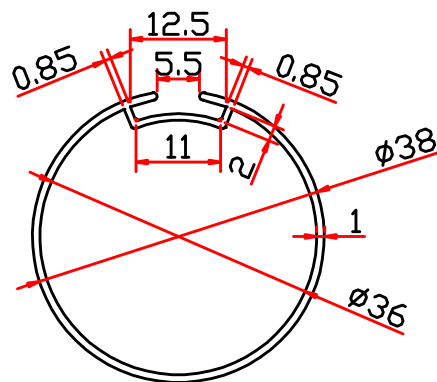
Drawn by LCG  
Date 2022.07.06

Checked by  
Date

Confirmed by  
Date

Sectional Area	143.81 mm <sup>2</sup> in <sup>2</sup>	Alloy/Temper	6063-T5	Series	CKRMC	Profile appellation	
Theory Weight	0.391 kg/m Lb/ft	Scale	1:1	Delivery	Theory weight	12/Bundle	
Out Perimeter	284.77 mm in	Finish		Precision	High Pre-cision	Edition	A
Circumscribed About circle	$\phi 58$ mm in	Standard	GB 5237.1-2017				

Mark of modified	Modifier	Date



1. This drawing is consistent with the customer's "samples / drawings", and the Demander shall be responsible for any patent or trademark matters.

2. If it is matched with other profiles or accessories, it is necessary to indicate or provide accessories. Otherwise, the assembly problems caused shall be borne by the customer.

3. The customer confirms the drawings, including confirming and approving the drawings, tolerances, acceptance standards, weight, decorative surface area and other information on the drawings.

Exposed Surface -----

Thickness	Solid	$\pm 0.13 \frac{\text{mm}}{\text{in}}$
Tolerance	Hollow	$\pm 0.21 \frac{\text{mm}}{\text{in}}$

- \* Important dimension.
- ( ) Referenced dimension.

Area of Exposed Surface: 0.0000 m<sup>2</sup>/m

Unspec. Thickness: 1.0 mm in Unspec. Radius: R0.3 mm in

Drawn by LCQ  
Date 2022.07.06

Checked by  
Date

Confirmed by  
Date

Series CKRMC Profile  
appellation

Delivery Theory weight 14/Bundle

Precision High Pre-cision Edition A

Sectional Area	124.599 mm <sup>2</sup> in <sup>2</sup>	Alloy/Tempor	6063-T5
Theory Weight	0.341 kg/m Lb/ft	Scale	1:1
Out Perimeter	137.217 mm in	Finish	
Circumscribed About circle	φ38 mm in	Standard	GB 5237.1-2017

GENERAL TOLERANCES

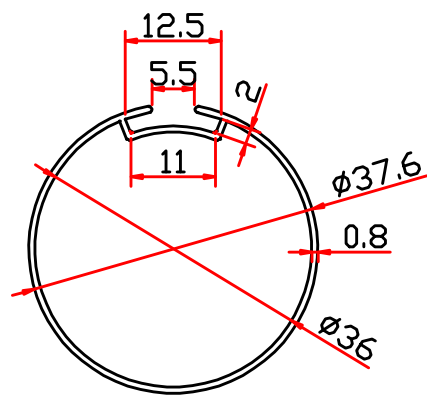
DIMENSION	LENGTH			BETWEEN HOLES AND PINS	ANGLES	RADIUS
	0-30	30-120	120-			
TOLERANCE	±0.2	±0.3	±0.4	±0.1	±0.5°	±0.1

CUSTOMER	Customer Draw No.
Signed by	Our Draw No. CKRMC311



广西瑞祺丰新材料有限公司  
Guangxi Ruiqi Feng New Material Co., Ltd.  
TEL: 13908080771 E-mail: info@huiqifeng-artist.com

Mark of modified	Modifier	Date



1. This drawing is consistent with the customer's "samples / drawings", and the Demander shall be responsible for any patent or trademark matters.
2. If it is matched with other profiles or accessories, it is necessary to indicate or provide accessories. Otherwise, the assembly problems caused shall be borne by the customer.
3. The customer confirms the drawings, including confirming and approving the drawings, tolerances, acceptance standards, weight, decorative surface area and other information on the drawings.

Exposed Surface -----

Area of Exposed Surface: 0.0000 m<sup>2</sup>/m

Unspec. Thickness: 0.8 mm in Unspec. Radius: R0.3 mm in

Drawn by LCQ  
Date 2022.07.06

Checked by  
Date

Confirmed by  
Date

Series CKRMC Profile appellation

Delivery Theory weight 18/Bundle

Precision High Pre-cision Edition A

Sectional Area	101.14 mm <sup>2</sup> in <sup>2</sup>	Alloy/Tempor	6063-T5
Theory Weight	0.276 kg/m Lb/ft	Scale	1:1
Out Perimeter	135.74 mm in	Finish	
Circumscribed About circle	36 mm in	Standard	GB 5237.1-2017

Thickness	Solid	±0.13 mm in
Tolerance	Hollow	±0.21 mm in

1. \* Important dimension.
2. ( ) Referenced dimension.

GENERAL TOLERANCES

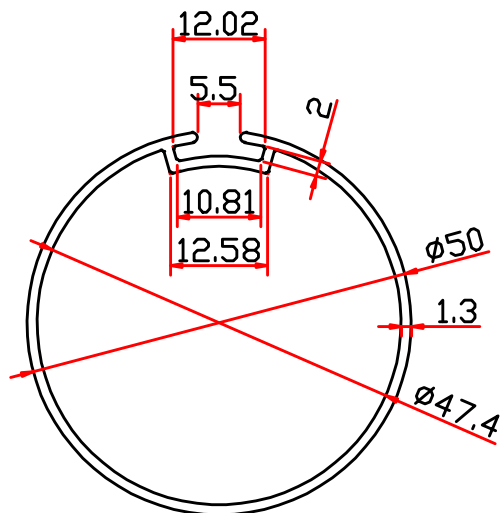
DIMENSION	LENGTH			BETWEEN HOLES AND PINS	ANGLES	RADIUS
	0-30	30-120	120-			
TOLERANCE	±0.2	±0.3	±0.4	±0.1	±0.5°	±0.1

CUSTOMER	Customer Draw No.	
Signed by	Our Draw No.	CKRMC312



广西瑞祺丰新材料有限公司  
Guangxi RuiQiFeng New Material Co.,Ltd.  
TEL: 13908000771 E-mail: info@shunfeng-artist.com

Mark of modified	Modifier	Date



1. This drawing is consistent with the customer's "samples / drawings", and the Demander shall be responsible for any patent or trademark matters.

2. If it is matched with other profiles or accessories, it is necessary to indicate or provide accessories. Otherwise, the assembly problems caused shall be borne by the customer.

3. The customer confirms the drawings, including confirming and approving the drawings, tolerances, acceptance standards, weight, decorative surface area and other information on the drawings.

Exposed Surface -----

Thickness	Solid	$\pm 0.13$ mm in
Tolerance	Hollow	$\pm 0.21$ mm in

- \* Important dimension.
- ( ) Referenced dimension.

Area of Exposed Surface: 0.0000 m<sup>2</sup>/m

Unspec. Thickness: 1.3 mm in Unspec. Radius: R0.3 mm in

Drawn by LCG  
Date 2022.07.06

Checked by  
Date

Confirmed by  
Date

Series CKRMC Profile appellation

Delivery Theory weight 8 /Bundle

Precision High Pre-cision Edition A

GENERAL TOLERANCES

DIMENSION	LENGTH			BETWEEN HOLES AND PINS	ANGLES	RADIUS
	0-30	30-120	120-			
TOLERANCE	$\pm 0.2$	$\pm 0.3$	$\pm 0.4$	$\pm 0.1$	$\pm 0.5^\circ$	$\pm 0.1$

CUSTOMER	Customer Draw No.
Signed by	Our Draw No. CKRMC313

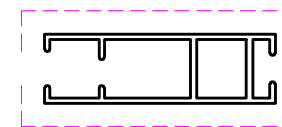


广西瑞祺丰新材料有限公司  
Guangxi RuiQiFeng New Material Co.,Ltd.  
TEL: 13980800771 E-mail: info@shunfeng-artist.com

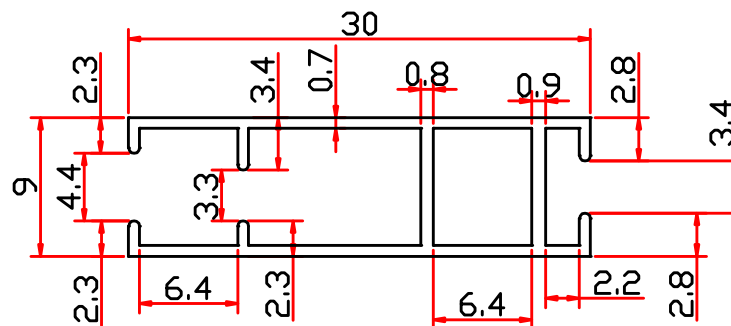
Sectional Area	213.898 mm <sup>2</sup> in <sup>2</sup>	Alloy/Tempor	6063-T5
Theory Weight	0.582 kg/m Lb/ft	Scale	1:1
Out Perimeter	174.2 mm in	Finish	
Circumscribed About circle	50 mm in	Standard	GB 5237.1-2017



Mark of modified	Modifier	Date



1:1



Exposed Surface - - - - -

1. This drawing is consistent with the customer's "samples / drawings", and the Demander shall be responsible for any patent or trademark matters.

2. If it is matched with other profiles or accessories, it is necessary to indicate or provide accessories. Otherwise, the assembly problems caused shall be borne by the customer.

3. The customer confirms the drawings, including confirming and approving the drawings, tolerances, acceptance standards, weight, decorative surface area and other information on the drawings.

Area of Exposed Surface: 0.0860 m<sup>2</sup>/m

Drawn by LCQ  
Date 2022.07.06

Unspec. Thickness: 0.7 mm in Unspec. Radius: R0.3 mm in

Checked by  
Date

Confirmed by  
Date

Sectional Area	62.794 mm <sup>2</sup> in <sup>2</sup>	Alloy/Temper	6063-T5	Series	CKRMC	Profile appellation	
Theory Weight	0.171 kg/m Lb/ft	Scale	1:1	Delivery	Theory weight	28	Bundle
Out Perimeter	143.397 mm in	Finish		Precision	High Pre-cision	Edition	A
Circumscribed About circle	∅32 mm in	Standard	GB 5237.1-2017				

Thickness	Solid	±0.13 mm in	1. * Important dimension. 2. ( ) Referenced dimension.
Tolerance	Hollow	±0.21 mm in	

GENERAL TOLERANCES

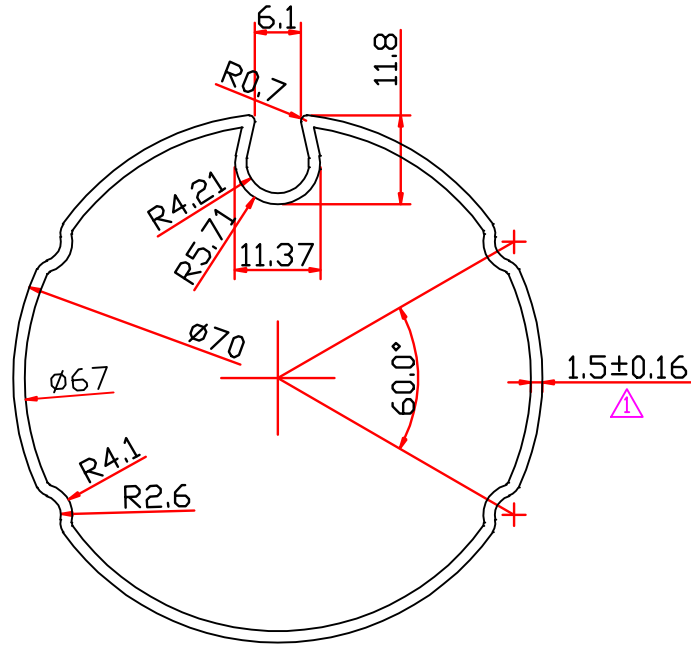
DIMENSION	LENGTH			BETWEEN HOLES AND PINS	ANGLES	RADIUS
	0-30	30-120	120-			
TOLERANCE	±0.2	±0.3	±0.4	±0.1	±0.5°	±0.1

CUSTOMER	Customer Draw No.	
Signed by	Our Draw No.	CKRMC314



广西瑞祺丰新材料有限公司  
Guangxi Ruiqi Feng New Material Co., Ltd.  
TEL: 13989800771 E-mail: info@shunfeng-artist.com

Mark of modified	Modifier	Date
△	LCQ	2023.07.27



1. This drawing is consistent with the customer's "samples / drawings", and the Demander shall be responsible for any patent or trademark matters.

2. If it is matched with other profiles or accessories, it is necessary to indicate or provide accessories. Otherwise, the assembly problems caused shall be borne by the customer.

3. The customer confirms the drawings, including confirming and approving the drawings, tolerances, acceptance standards, weight, decorative surface area and other information on the drawings.

Exposed Surface -----

Thickness	Solid	mm in
Tolerance	Hollow	mm in

- \* Important dimension.
- () Referenced dimension.

GENERAL TOLERANCES

DIMENSION	LENGTH			BETWEEN HOLES AND PINS	ANGLES	RADIUS
	0-30	30-120	120-			
TOLERANCE	±0.2	±0.3	±0.4	±0.1	±0.5°	±0.1

CUSTOMER	Customer Draw No.
Signed by	Our Draw No. CKRMC315



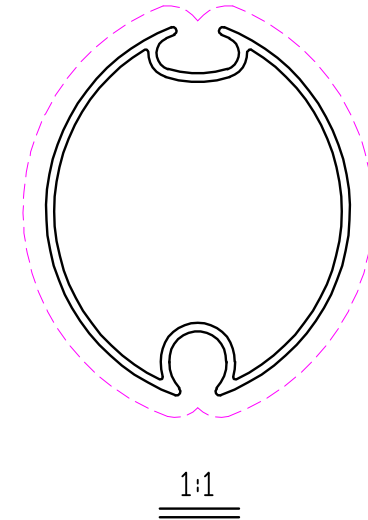
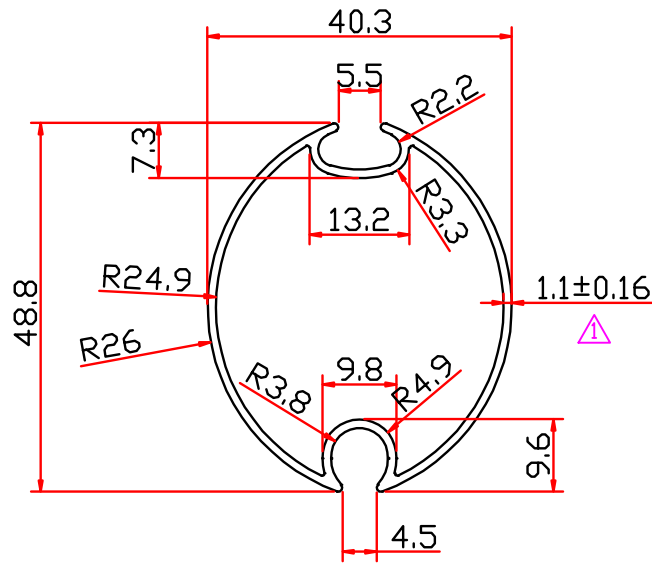
广西瑞祺丰新材料有限公司  
Guangxi RuiQiFeng New Material Co.,Ltd.  
TEL: 13550890771 E-mail: info@alummm-artist.com

Area of Exposed Surface: 0.2417 m<sup>2</sup>/m

Unspec. Thickness: 1.5 mm in Unspec. Radius: R0.3 mm in

Sectional Area	354.83 mm <sup>2</sup> in <sup>2</sup>	Alloy/Temper	6063-T5	Drawn by Date	LCQ 2023.07.27
Theory Weight	0.965 kg/m Lb/ft	Scale	1:1	Checked by Date	
Out Perimeter	241.65 mm in	Finish		Confirmed by Date	
Circumscribed About circle	φ70 mm in	Standard	GB 5237.1-2017	Series	CKRMC
		Precision	High Pre- cision	Profile appellation	
				Delivery	Theory weight 6 /Bundle
					Edition A

Mark of modified	Modifier	Date
△	LCQ	2023.07.27



1. This drawing is consistent with the customer's "samples / drawings", and the Demander shall be responsible for any patent or trademark matters.

2. If it is matched with other profiles or accessories, it is necessary to indicate or provide accessories. Otherwise, the assembly problems caused shall be borne by the customer.

3. The customer confirms the drawings, including confirming and approving the drawings, tolerances, acceptance standards, weight, decorative surface area and other information on the drawings.

Exposed Surface - - - - -

Thickness	Solid	mm in
Tolerance	Hollow	mm in

- \* Important dimension.
- ( ) Referenced dimension.

GENERAL TOLERANCES

DIMENSION	LENGTH			BETWEEN HOLES AND PINS	ANGLES	RADIUS
	0-30	30-120	120-			
TOLERANCE	±0.2	±0.3	±0.4	±0.1	±0.5°	±0.1

CUSTOMER	Customer Draw No.
Signed by	Our Draw No. CKRMC316



广西瑞祺丰新材料有限公司  
Guangxi RuiQiFeng New Material Co.,Ltd.  
TEL: 13550890771 E-mail: info@alummm-artist.com

Area of Exposed Surface: 0.1739 m<sup>2</sup>/m

Unspec. Thickness: 1.1 mm in Unspec. Radius: R0.3 mm in

Sectional Area	180.76 mm <sup>2</sup> in <sup>2</sup>	Alloy/Temp	6063-T5	Drawn by	LCQ	Date	2023.05.24
Theory Weight	0.492 kg/m Lb/ft	Scale	1:1	Checked by			
Out Perimeter	173.94 mm in	Finish		Confirmed by			
Circumscribed About circle	∅49.2 mm in	Standard	GB 5237.1-2017	Series	CKRMC	Profile appellation	
				Delivery	Theory weight	10/Bundle	
				Precision	High Pre- cision	Edition	A