



瑞祺丰新材料

Aluminum Artist, Aluminum Specialist

GUANGXI RUI QIFENG NEW MATERIAL CO., LTD.

Add: Pingguo Industrial Zone, Baise, Guangxi, China.

Sales Center: Room 1709, Building 2, No. 21,
Pingle Avenue, Liangqing District, Nanning, China

E-mail : info@aluminum-artist.com

Web: www.aluminum-artist.com



瑞祺丰新材料
RUIQIFENG NEW MATERIAL

Aluminum Artist, Aluminum Specialist



广西瑞祺丰新材料有限公司

GUANGXI RUI QIFENG NEW MATERIAL CO., LTD.

Vendor for One-Stop Aluminum Profile Processing Solutions

www.aluminum-artist.com

CONTENT

1.OUR COMPANY.....	01
1.1 About Us.....	01
1.2 Rui Qifeng History.....	02
1.3 Qualification And Honors.....	03
1.4 Factory Workshop.....	04
1.5 Quality Controlling.....	09
2. OUR PRODUCTS.....	10
2.1 Aluminum Heat Sinks	11
2.2 Industrial Aluminium Profiles	15
2.2.1 New Energy Vehicles Battery Tray.....	17
2.2.2 Ruiqifeng Industrial Aluminum Profiles Application In The Solar Field....	18
2.2.3 Universal series solar Mounting Systems.....	19
2.2.4 Custom series solar Mounting Systems.....	20
2.2.5 Aluminium Solar Panel Frame.....	21
2.3 Aluminium Profiles For Window And Doors.....	23
2.4 Curtain Wall Aluminum Profiles.....	29
3. OUR PROJECTS.....	32
3.1 Building Construction Project.....	32
3.2 Heat Sink Project.....	34
3.3 Industrial Aluminium Profiles Project.....	35
4. WHY CHOOSE US ?.....	36
5. OUR MARKET.....	36



ABOUT US

Guangxi Rui Qifeng New Material Co., Ltd. is an enterprise with 20 years of experience in aluminum extrusion, providing one-stop aluminum processing solutions for global customers.

The factory is located in Pingguo, Guangxi, which is rich in aluminum resources. We have long-term close cooperation with CHALCO, and has a complete aluminum industry chain, covering aluminum alloy research and development, aluminum rod casting, mold design, profile extrusion, surface treatment and deep processing, and other modules. The products are used in various industries such as architectural aluminum profiles, aluminum heat sinks, green energy, automotive, electronic appliances and so on. Our annual production capacity can reach up to 100,000 tons.

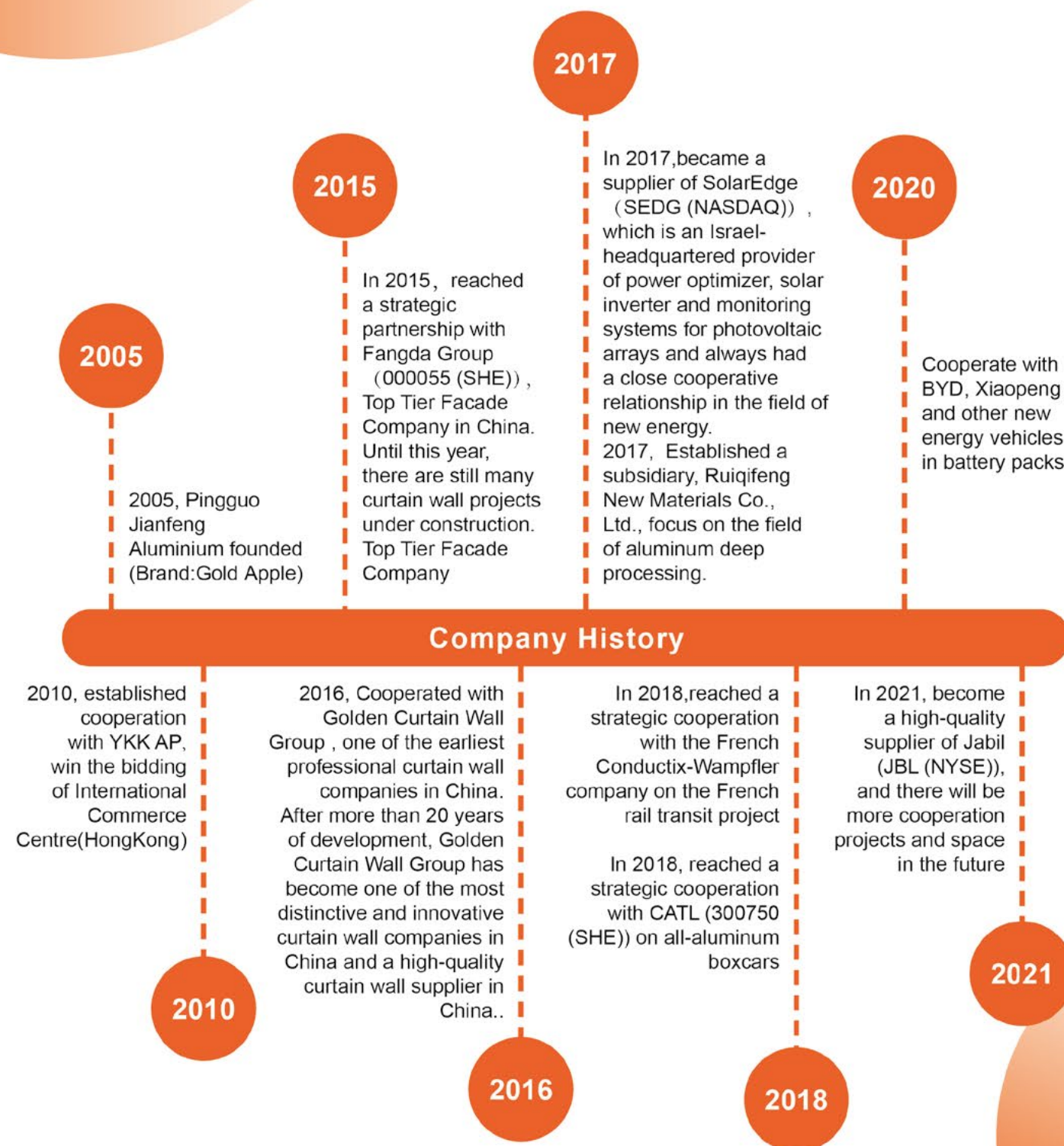
The company adopts standardized management and evaluation system, and has successively introduced ISO9001 quality management system, ISO14001 environmental management system and China CQM product quality. Meanwhile, we have obtained more than 30 national patents, and our products are in a leading position in the international market.

We are market-oriented and regard "100% ex-factory qualified, 100% customer satisfaction" as our goal, our products are exported to 50 countries and regions including North America, South America, Africa, Middle East, and Southeast Asia.

Let us create a sustainable and bright future together!

TIMELINE RUI QIFENG HISTORY

2005-2023



HONORS & QUALIFICATIONS



Ruiqifeng's products are widely used in construction, renewable energy, electric vehicles and other fields. In order to ensure that the quality and performance of aluminum profile products meet international standards and provide high-quality products and services, Ruiqifeng has always paid great attention to quality management. It has passed the ISO90001 quality system certification, and is in the process of CE and IATF 16949 certification.

So far, we have obtained dozens of patents, and in China, we have been rated as a high-tech enterprise honor.



The honor is not an approval to our past but also an encouragement to our present from the society,expectance to our future as well. We are well aware of a long way full of responsibility to go.

FACTORY WORKSHOP

Melting & Casting Workshop



Casting Furnace

Homogeneous Furnace

Advanced casting furnace can produce aluminum alloy series 6&7, and various dimension of aluminum rod.

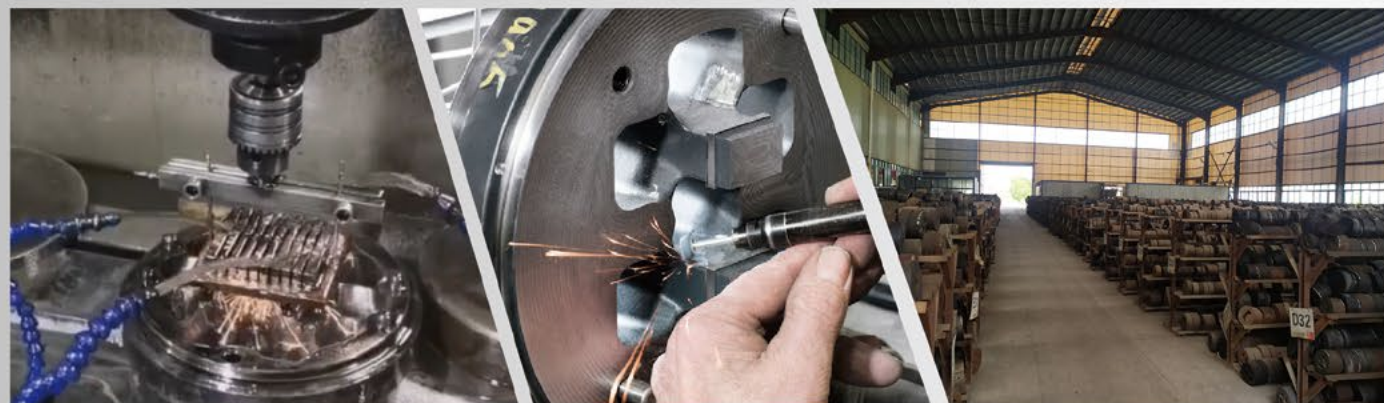
Extruding Workshop



Granco Clark Traction Machine

Mold Design Center

At Ruiqifeng, we make our own dies. We also buy dies from independent toolmakers. We develop design aids for effective extrusion die design, we correct dies to optimize productivity and we research die performance.



Mold Design-1

Mold Design-2

Existing mold stock

Possessed of 600-5000 tons advanced extruder, and equipped with Granco Clark traction machine(made in USA), can produce a variety of high precision profiles which circumference can up to 510mm at most.



Extruding Workshop-1

Extruding Workshop-2

5000 Ton Extruder

FACTORY WORKSHOP

Powder Coating Workshop



Japan Horizontal PVDF Coating Equipment

Swiss Horizontal Powder Coating Equipment

Swiss Stand Powder Coating Equipment

CNC Processing Center

Utilizing advanced CNC, Lathes, Milling Machine Drilling Machine, and EDM etc machines produce various of high precision and sophisticated moulds.



CNC Processing Center

Anodizing Workshop

Processed of advanced oxygenation & electrophoresis production lines, can produce oxygenation, electrophoresis, polishing and other series products.



Anodizing

Well-equipped warehouse and logistics system

Ruiqifeng can satisfy with the different clients' specified requirement in packing and shipping. We are closely cooperating with many forwarders and shipping companies to guarantee a safe and on time delivery.



Finished Goods Warehouse

Packaging

Logistic Supply-Chain

Transportation network by sea, land and air

FACTORY WORKSHOP

Deep Processing Workshop



The Ruiqifeng team can provide you with the most appropriate system solutions, so as to improve productivity, repeatability and process control.

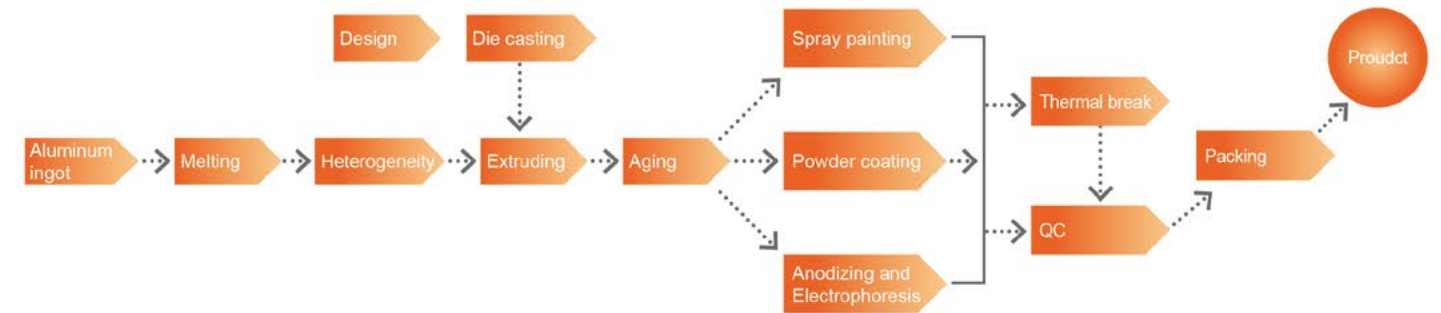
QUALITY CONTROLLING

Establishing severest quality supervision and pursuit perfect product belief are all Ruiqifeng person's reputation and responsibility.

Perfect production process, strict closed-loop management system, advanced instrument testing equipment to ensure the quality of our products.



Producing Process



Ruiqifeng possesses of all kinds of CNC machine, such as CNC engraving machine, CNC double head saw, digital automatic horizontal saw machine, CNC punch press, five axis CNC machining center, etc.

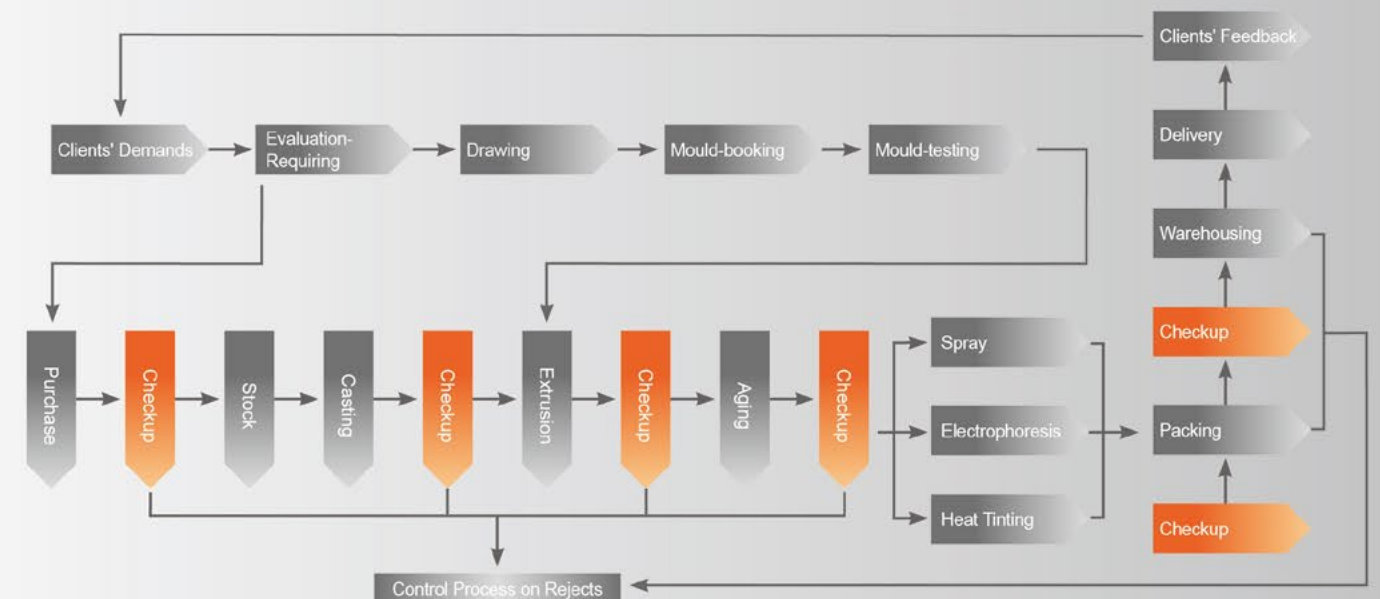


CNC machining Center

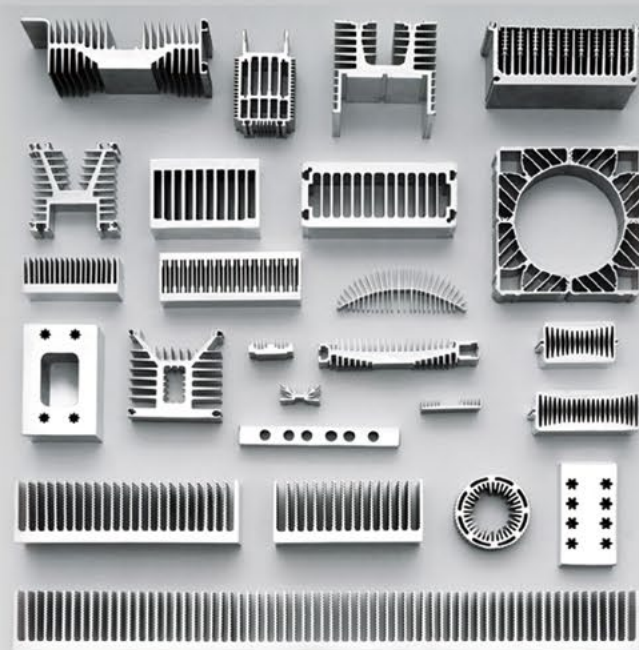
CNC Engraving

3D Measuring Machine

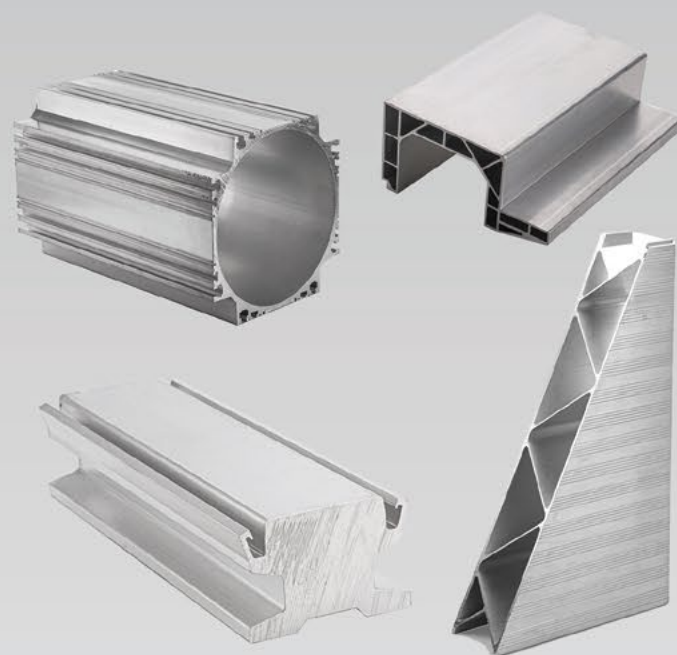
Figure of Technical Process and Producing Process



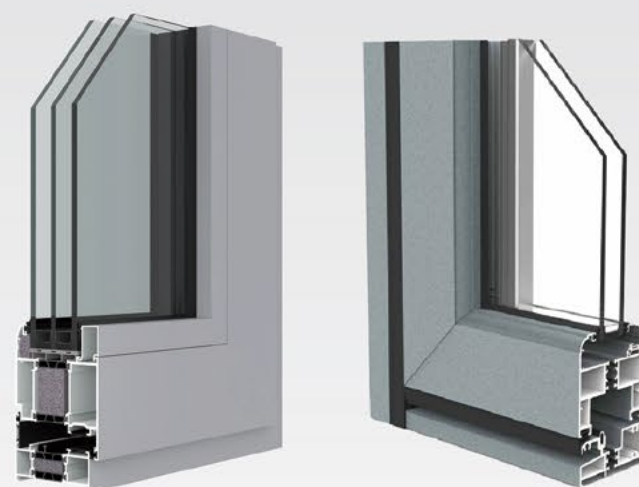
OUR PRODUCTS



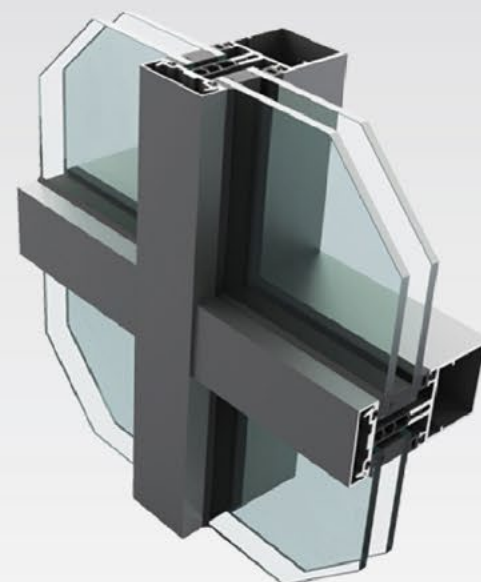
Aluminum Heat Sinks



Industrial Aluminium Profiles



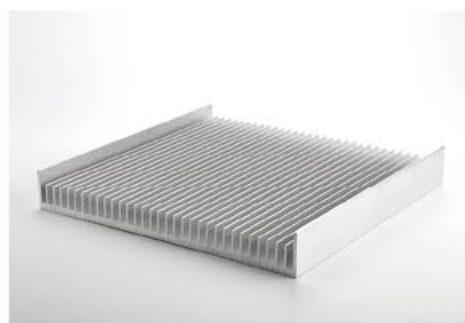
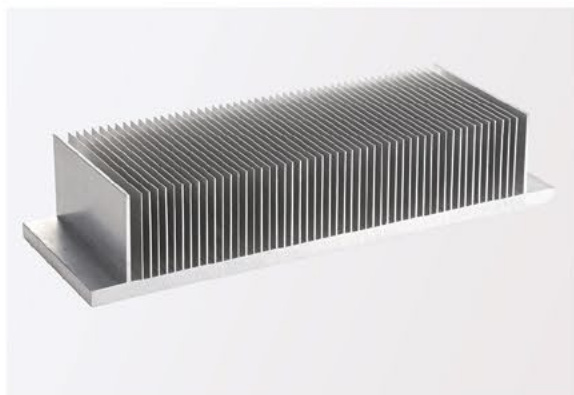
Aluminium Profiles for Window and Doors



Curtain Wall Aluminum Profile

Aluminum Heat Sink Application



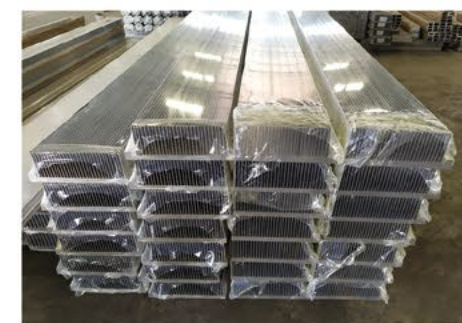
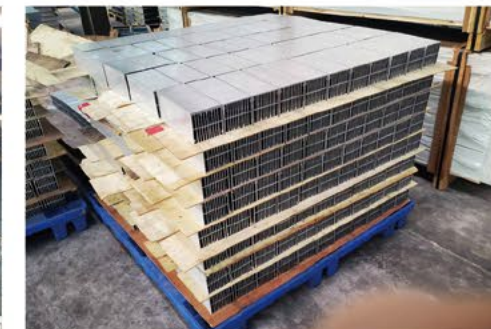


Ruiqifeng provides a wide range of sizes and configurations for extruded aluminum heat sinks. You can purchase the aluminum extruded heat sink you need. If you can't find a product that exactly matches your needs, we can work with you to design customized heat sink extrusion to meet your needs.

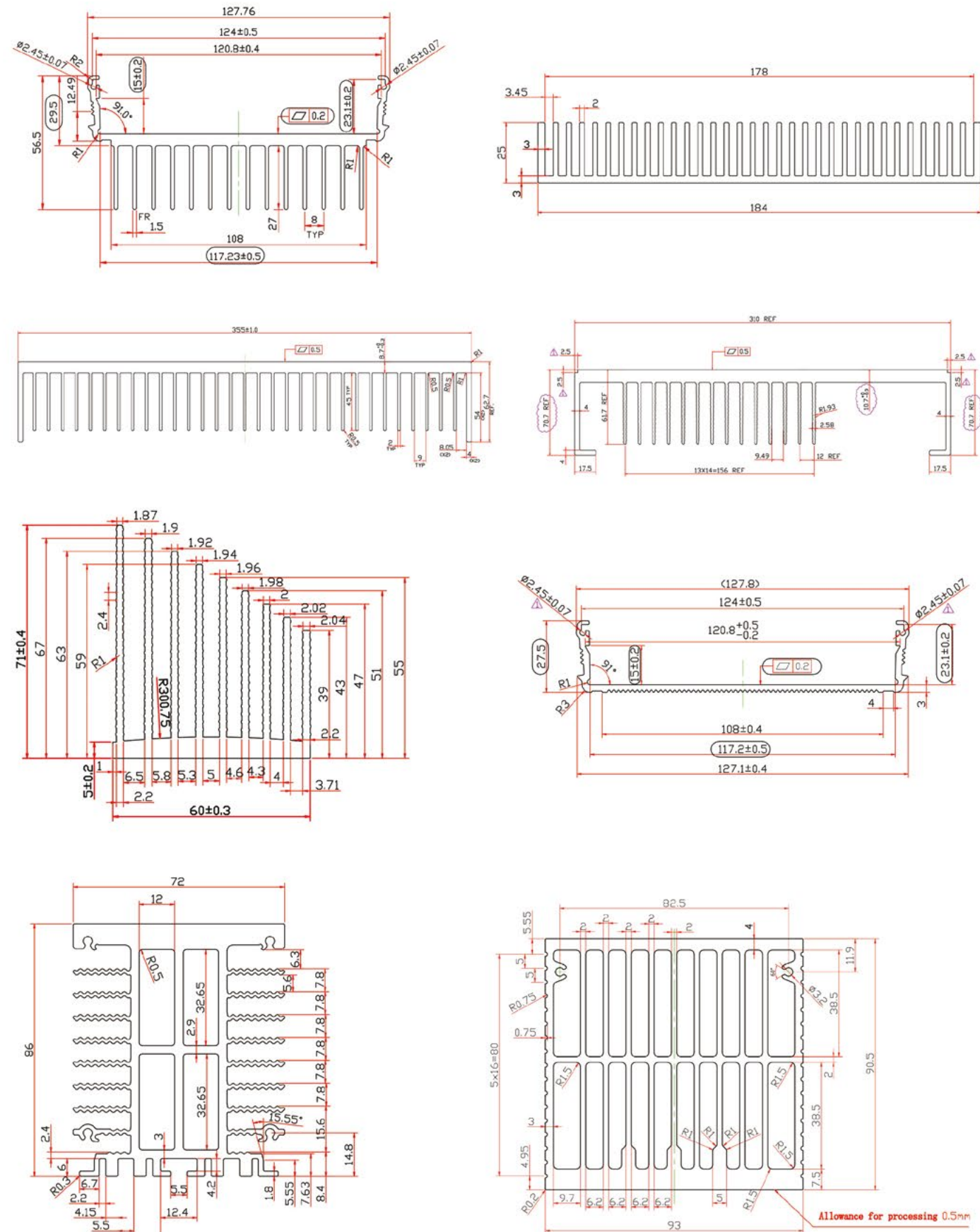
Ruiqifeng extruded heat sinks are widely used in a variety of industries, including inverters, Electronics, Green Energy, information technology, consumer, medical, LED lighting and power conversion, and so on.

The main advantages of Ruiqifeng aluminum extruded heat sinks are as follows:

1. One-stop design & manufacturing solutions save your whole cost.
2. Standard existing extruded heat sink with standard size save your initial cost.
3. Fast shipment of standard extruded heat sink size.
4. Thousands available molds for your alternative.
5. Customized your own design with our latest tooling technology.



Heat Sink Drawing Design



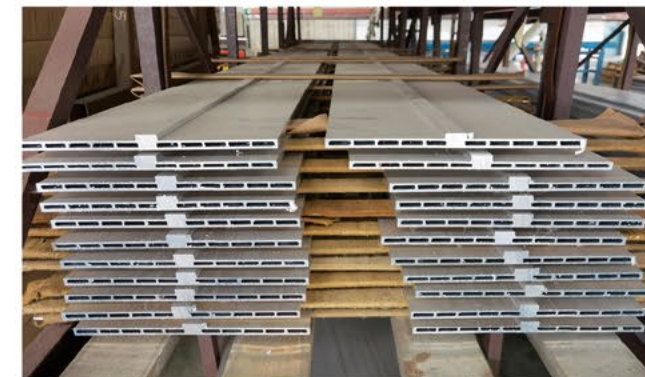
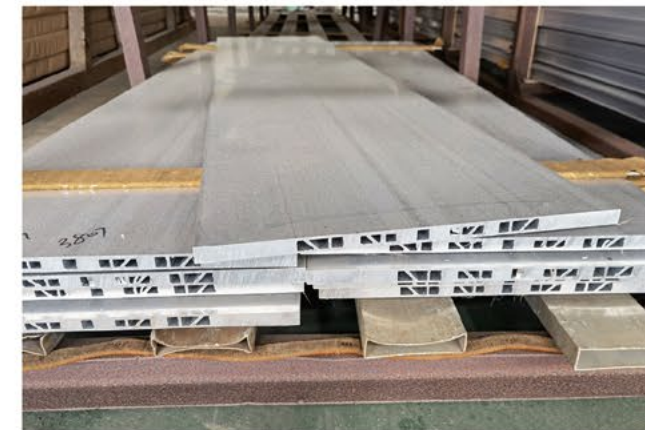
Industrial Aluminum Profile Application



New Energy Vehicles Battery Tray

Our advantages in the New Energy Vehicles Battery Tray:

1. Technician team: over 20 years of experience in Aluminium extrusion for industrial applications.
2. The rich source of Aluminium ingot locally.
3. Export staff embodied fluent English communication skills, and good knowledge of aluminium extrusion industries, and exports. Stable and reliable to help to sort out all problems.
4. Wide range of Aluminium alloy materials available.
5. Undertake any quality problems unconditionally.



With the advantages of the whole industrial chain, Ruiqifeng aims at the "high-end, specialized" route. In the field of industrial aluminum profiles, Ruiqifeng has selected several development areas. One is in the field of lightweight automobiles. Mainly, such as anti-collision beams, power battery trays, etc.; The second is solar inverter radiators, electronic appliances, etc. Ruiqifeng has accumulated quite a lot of technology, experience and partners in this area.

Ruiqifeng Industrial Aluminum Profiles Application In The Solar Field



Aluminium Profiles for Solar mounting Systems



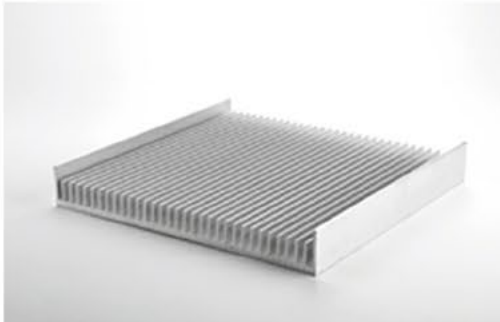
APPLICATION



Aluminum Profile For Solar Panel Frames



Aluminum Heat Sink For Power converter



Aluminum Heat Sink For Solar Inverter-1



Aluminum Heat Sink For Solar Inverter-2

Aluminium Profiles for Solar mounting Systems

Installers of solar energy systems rely on quick and easy installation, low assembly costs and flexibility. What you may not know is that extruded aluminium profiles make this possible.



Save time and money with aluminium profiles

Aluminium has the ideal properties for use in photovoltaic systems:

- It is sturdy yet light, so the load on roofs and other surfaces is reduced
- It offers click-and-plug connections and a reduced number of individual parts and components, facilitating assembly as well as disassembly, fewer work steps and labor
- Its corrosion resistance ensures less maintenance and a longer service life for components

Universal Series Solar Mounting Systems



Product Details



Project Details

Product Specification

Product Dimensions: 29.53 x 1.97 x 1.97 inches(Custom Size)Item Weight: 7.26 pounds.

Manufacturer: Ruiqifeng New Material Co, Ltd.

Surface Treatment: Electrophoresis, Silver anodizing, Powdercoating.

Country of Origin: Guangxi, China (Mainland)Max wind capacity:45m/s, Max snow capacity:0.8KN/m.

Installation site: Tile roof

Applicable modules: Frame or frameless.

Warranty Period: 10 years.

ACCESSORIES SHOW



ALUMINUM RAILS
White & black, 3200mm,
4200mm, 5200mm



MID CLAMP
White & black, 35mm,
40mm, 45mm



END CLAMP
White & black, 35mm,
40mm, 45mm



GROUND LUG
White & black,
20mm



RAIL SPLICE
White & black,
150mm, 200mm



PAN TILE BRACKET
horizontal fixed, M6.3x
65mm roof screw



ADJUSTABLE HOOK
horizontal fixed, adjustable,
M6.3x 65mm roof screw



ROOF SCREWM
6.3x65mm/70mm/75mm,
EDPM, waterproof

Custom series Systems Solar Mounting

TR Rails series are the structural backbone of pitched, flat and ground-based arrays. Their signature curve helps them to resist uplift, protect against buckling and safely and efficiently transfer loads into the building structure.

Their superior spanning capability requires fewer roof attachments, reducing the number of roof penetrations and the amount of installation time.

Each size supports specific design loads, while minimizing material costs. Depending on your location, there is an TR Rail series to match.



Product Specification



TR10 RAIL

TR10 is a sleek, low-profile mounting rail, designed for regions with light or no snow. It achieves 6 foot spans, while remaining light and economical.

6' spanning capability
Moderate load capability
Clear & black anodized finish
Internal splices available



TR100 RAIL

TR100 is the ultimate residential mounting rail. It supports a range of wind and snow conditions, while also maximizing spans up to 8 feet.

8' spanning capability
Heavy load capability
Clear & black anodized finish
Internal splices available



TR1000 RAIL

TR1000 is a heavyweight among solar mounting rails. It's built to handle extreme climates and spans up to 12 feet for commercial applications.

12' spanning capability
Extreme load capability
Clear anodized finish
Internal splices available

TR Rail Selection

The below table provides a quick guide on how each rail supports regional circumstances.

Load		Rail Span						
Snow (PSF)	Wind (MPH)	4'	5' 4"	6'	8'	10'	12'	
None	90							
	120							
	140							
	160							
20	90	TR10						
	120	TR10						
	140	TR10						
	160	TR10						
30	90		TR100					
	120		TR100					
	140		TR100					
	160		TR100					
40	90			TR1000				
	120			TR1000				
	140			TR1000				
	160			TR1000				
80	90				TR1000			
	120				TR1000			
	140				TR1000			
	160				TR1000			

Projects Details



Aluminium Solar Panel Frame

The aluminium frames around the solar panel, hugging the glass covering on top and the back sheet at the bottom, has been important, though often ignored component of a solar panel.

Aluminium solar panel frame and mounting bracket are used to seal and fix solar battery components. They provide the structural stability for the overall combination of glass, EVA encapsulates, the cell and the back sheet. Enhancing components strong support and increasing the battery service life.



Why Does Solar Energy use Aluminium Frame?

The main reasons are:

- Use aluminium frame to protect the solar energy components.
- Aluminium frame has good conductive properties and can be used as lightning protection during the thunderstorm.
- The strength of aluminium frame is high. Stable and reliable. Corrosion resistance.

Ruiqifeng Aluminium Solar Panel Frame Advantages:

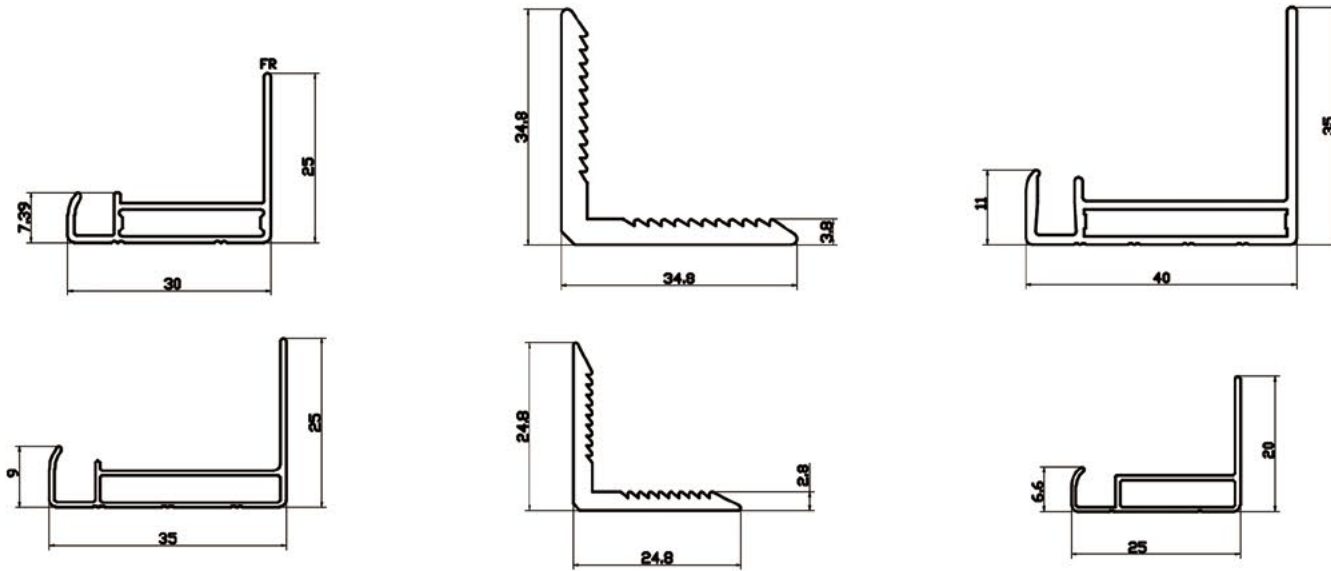
- Anodized Aluminium Alloy 6063 with clear coating for high corrosion and oxidation resistance.
- High tensile strength performance to improve snow load resistance, rain and wind impact.
- The excellent mould minimized the allowance to 0.02mm as well as ensures the accuracy, ensure the smooth installation.

Features of Aluminum Profile For Solar Panel

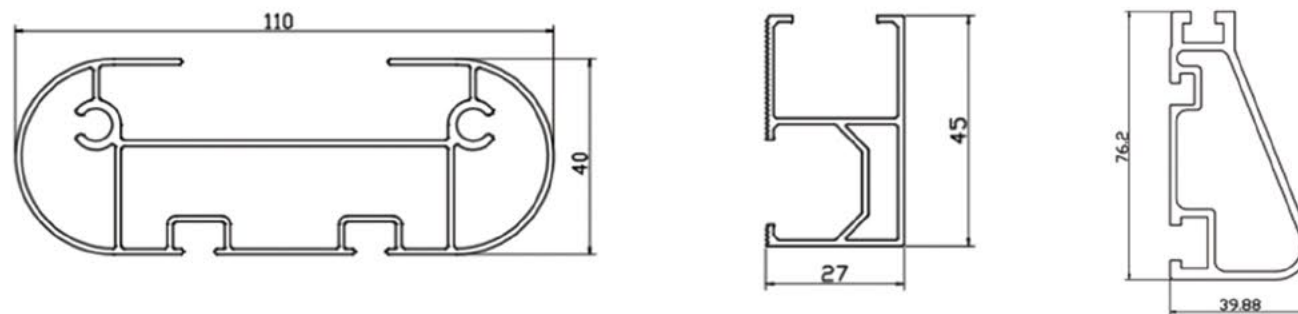
Alloy	Standard	Surface Treatment	Further Process	Certificate
6005 T5/T6				
6060 T5/T6		Mill finish, Powder Coating.	Drilling, Bending	
6061 T4/T6	GB 5237-2008	Anodizing, Wooden grain	Welding, Precise	
6063 T5/T6	JISH,AAMA,GB	Electrophoresis,PVDF	cutting, Punching	CE, DNV,TUV
6463 T5/T6	BS,En	Painting, Sanding blasting.	Fabrication of	S09001
6082 T5/T6		Polishing,etc.	finished products	

Industrial Aluminum Profile Drawing Design

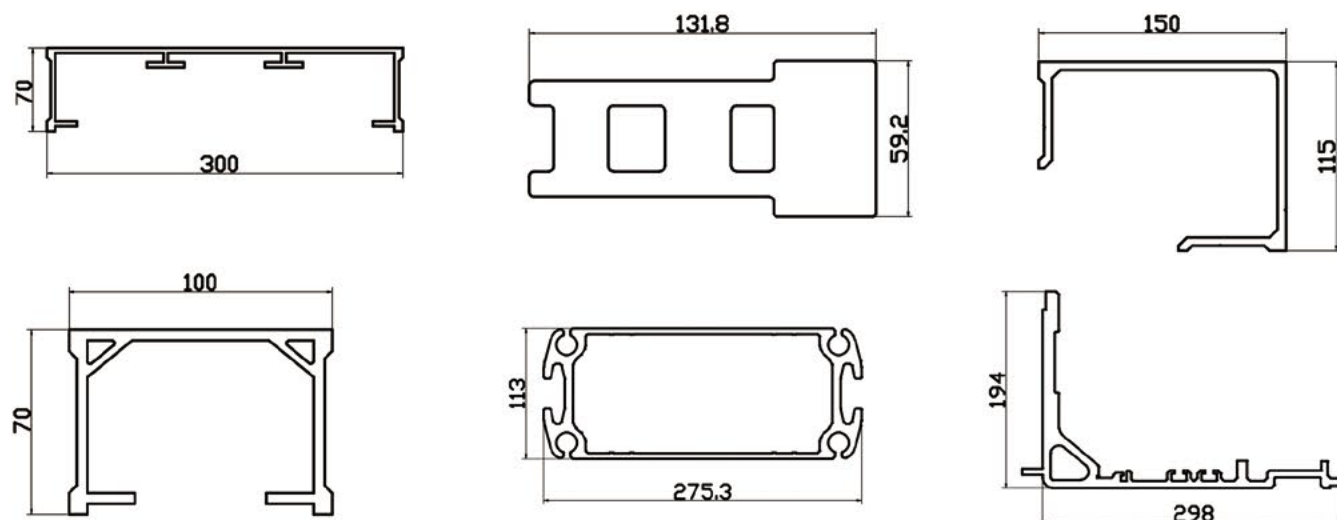
• Solar Panel Frame



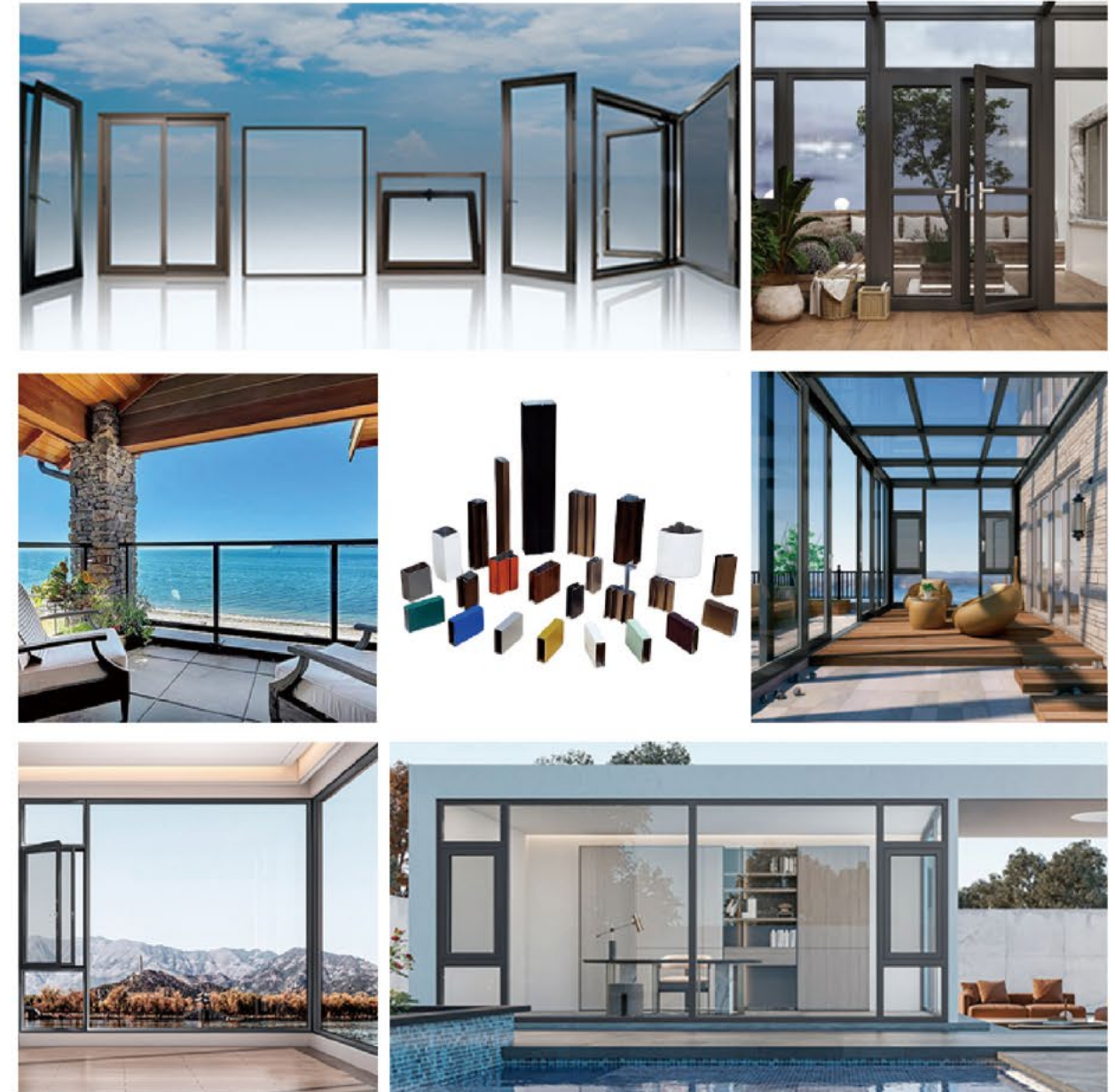
• Solar mounting Systems



• Other Industrial Aluminum Profile



Aluminum Profile For Windows and Doors

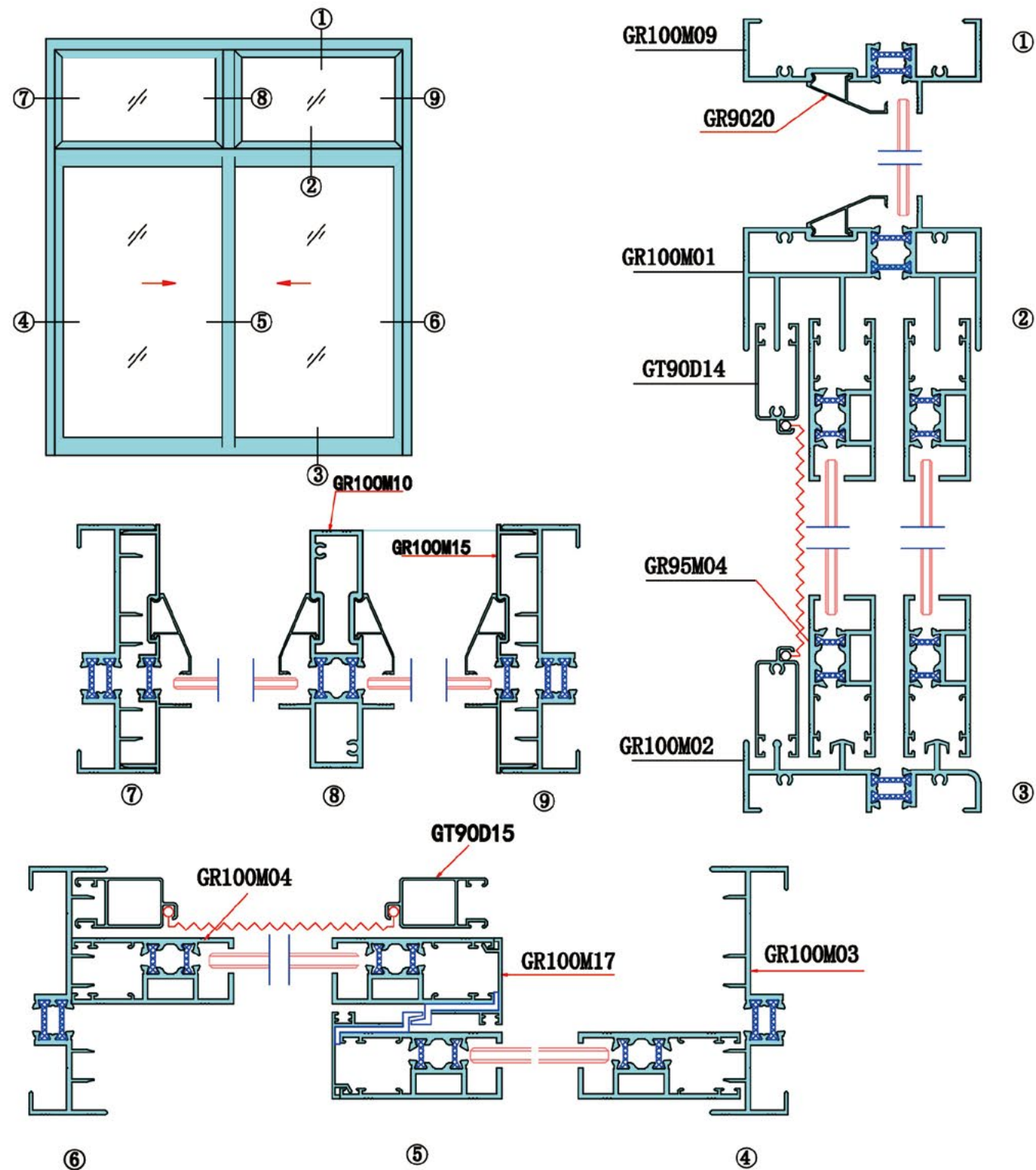


Why choose aluminium for doors, windows or building openings?

Aluminium doors and windows are strong, durable and highly corrosion-resistant.

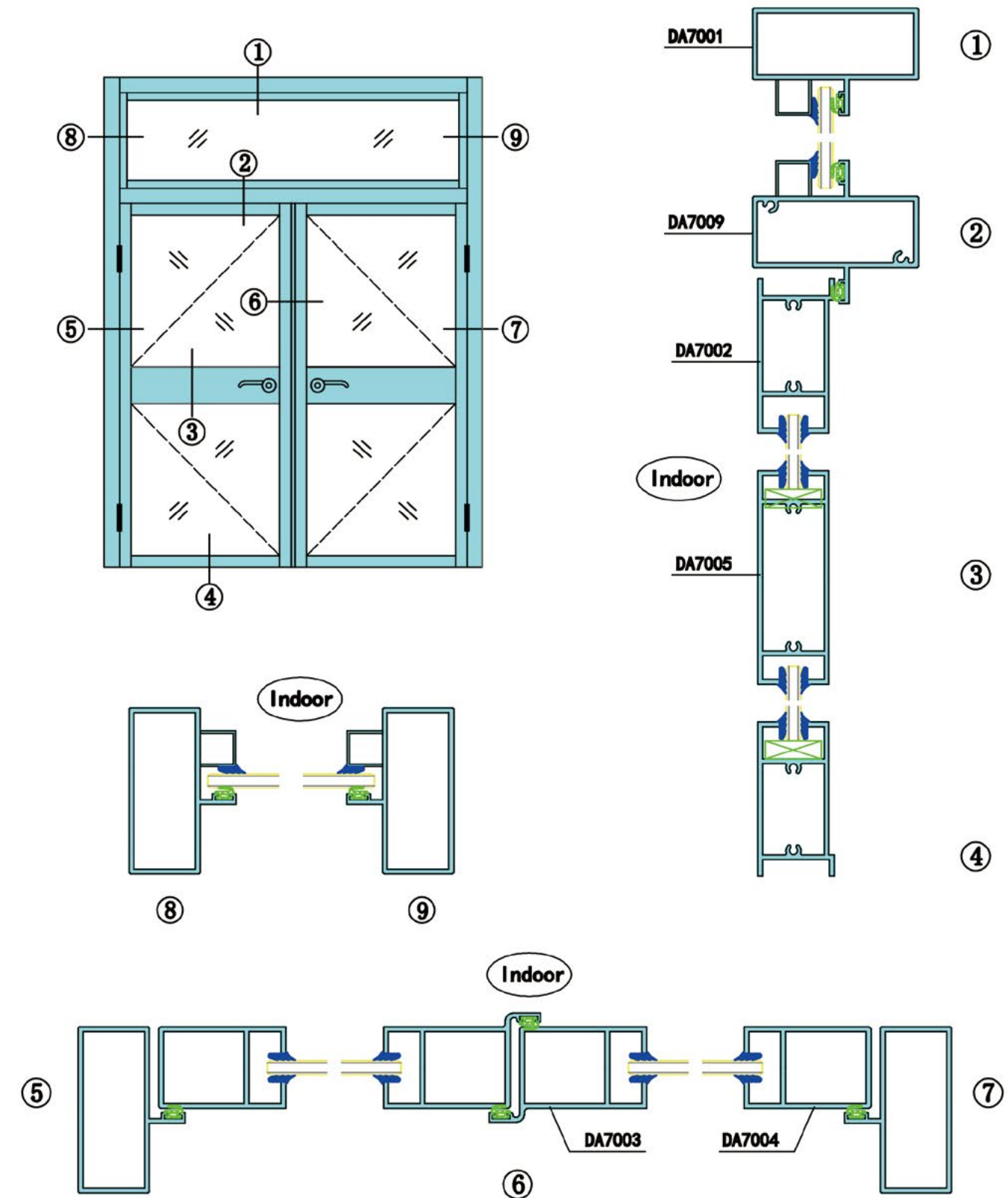
Doors and windows made from aluminium offer a sustainable, energy efficient and lightweight alternative to conventional materials. Compared to alternative frames such as wood, aluminium products don't need regular painting or staining to keep them weather-proof. Our aluminium door and window systems can be specified in a range of finishes and treatments, desirable and virtually maintenance free in almost any environment.

Aluminum Window Drawing Design



*The drawings are chosen from our system which contains thousands of ODM solution from all over the world.

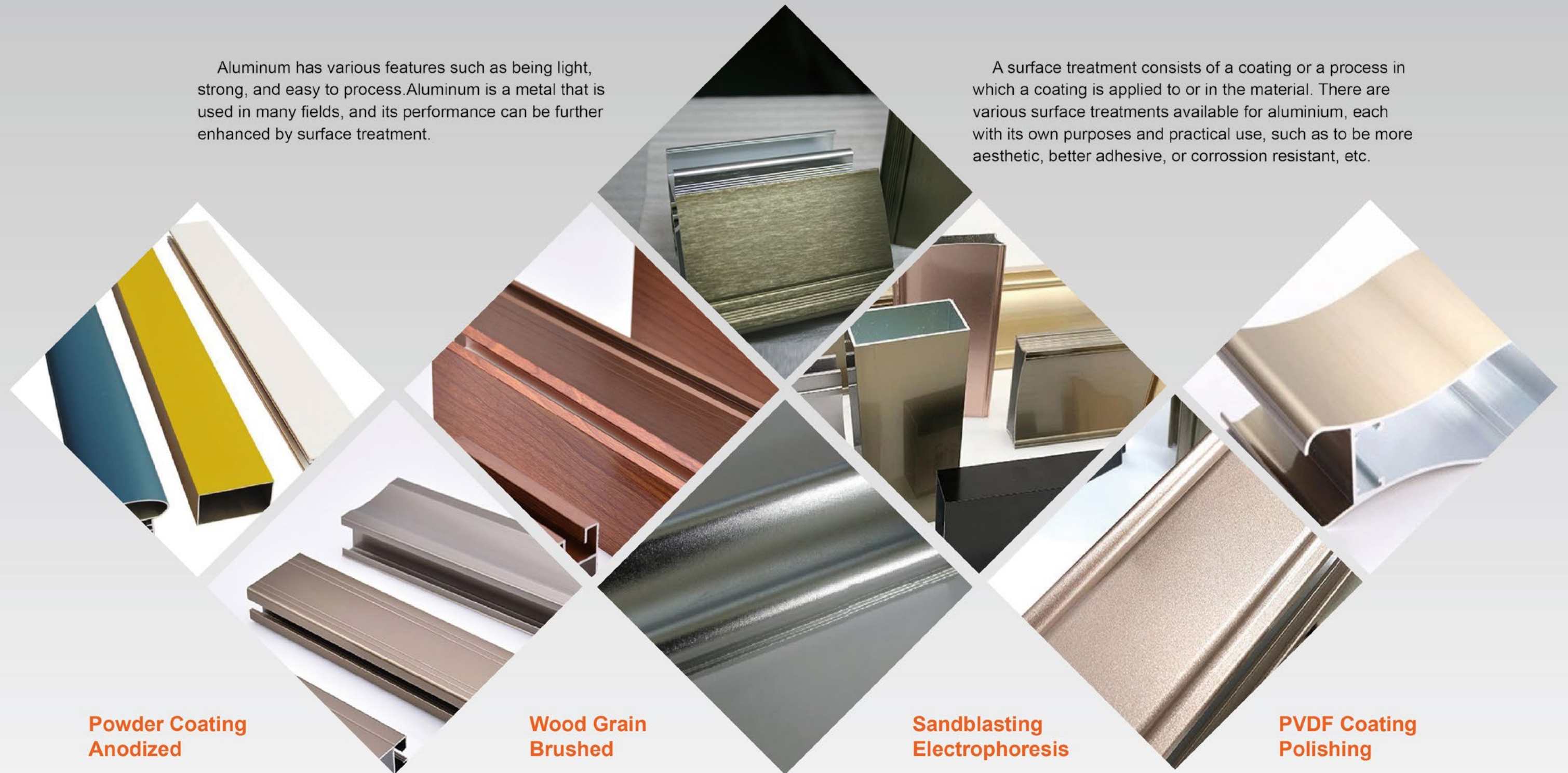
Aluminum Door Drawing Design



Aluminum Profile Surface Treatment

Aluminum has various features such as being light, strong, and easy to process. Aluminum is a metal that is used in many fields, and its performance can be further enhanced by surface treatment.

A surface treatment consists of a coating or a process in which a coating is applied to or in the material. There are various surface treatments available for aluminium, each with its own purposes and practical use, such as to be more aesthetic, better adhesive, or corrosion resistant, etc.



**Powder Coating
Anodized**

**Wood Grain
Brushed**

**Sandblasting
Electrophoresis**

**PVDF Coating
Polishing**

Powder Coating Color Choices

RAL 1000		RAL 4007		RAL 7008	
RAL 1001		RAL 4008		RAL 7009	
RAL 1002		RAL 4009		RAL 7010	
RAL 1003		RAL 5000		RAL 7026	
RAL 1016		RAL 5009		RAL 7030	
RAL 1017		RAL 5010		RAL 7031	
RAL 1018		RAL 5014		RAL 7032	
RAL 1024		RAL 5015		RAL 9010	
RAL 1027		RAL 5017		RAL 9016	
RAL 1028		RAL 5018		RAL 7035	
RAL 1032		RAL 5024		RAL 7036	
RAL 1033		RAL 6000		RAL 7042	
RAL 1034		RAL 6001		RAL 7043	
RAL 2000		RAL 6002		RAL 7044	
RAL 2001		RAL 6015		RAL 7046	
RAL 2002		RAL 6016		RAL 8000	
RAL 2003		RAL 6017		RAL 8001	
RAL 2004		RAL 6018		RAL 8002	
RAL 2008		RAL 6019		RAL 8023	
RAL 3000		RAL 6027		RAL 8024	

* Above are printing colors, manufacturing is subject to the actual color swatches.

Curtain Wall Aluminum Profile



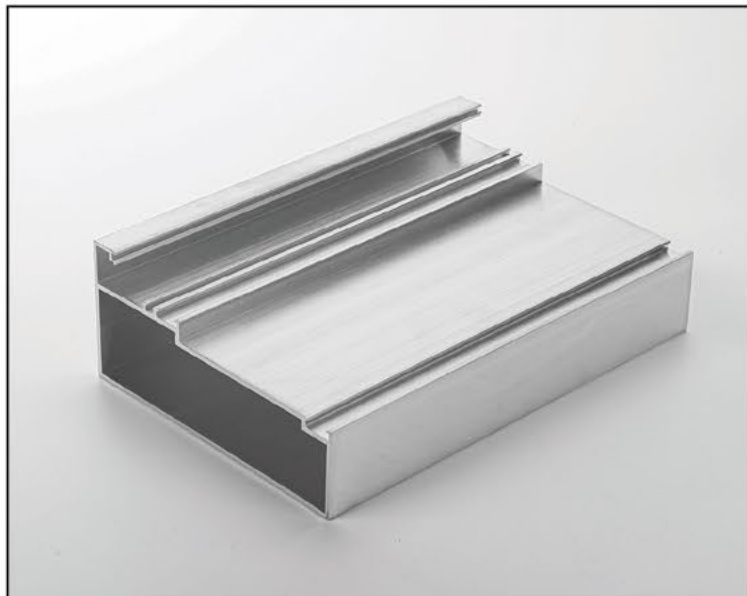
So far, aluminum curtain wall has been dominant in metal curtain walls. Lightweight materials reduce the load on buildings and provide good conditions for high-rise buildings. The aluminum curtain wall has excellent water-proof, anti-fouling, and anti-corrosion performance, which ensures the long-lasting newness of the exterior surface of the building.

As one of the most experienced aluminum curtain wall suppliers in China, Rui Qifeng sells various high-quality curtain wall products all over the world and recognized by the market in our projects.

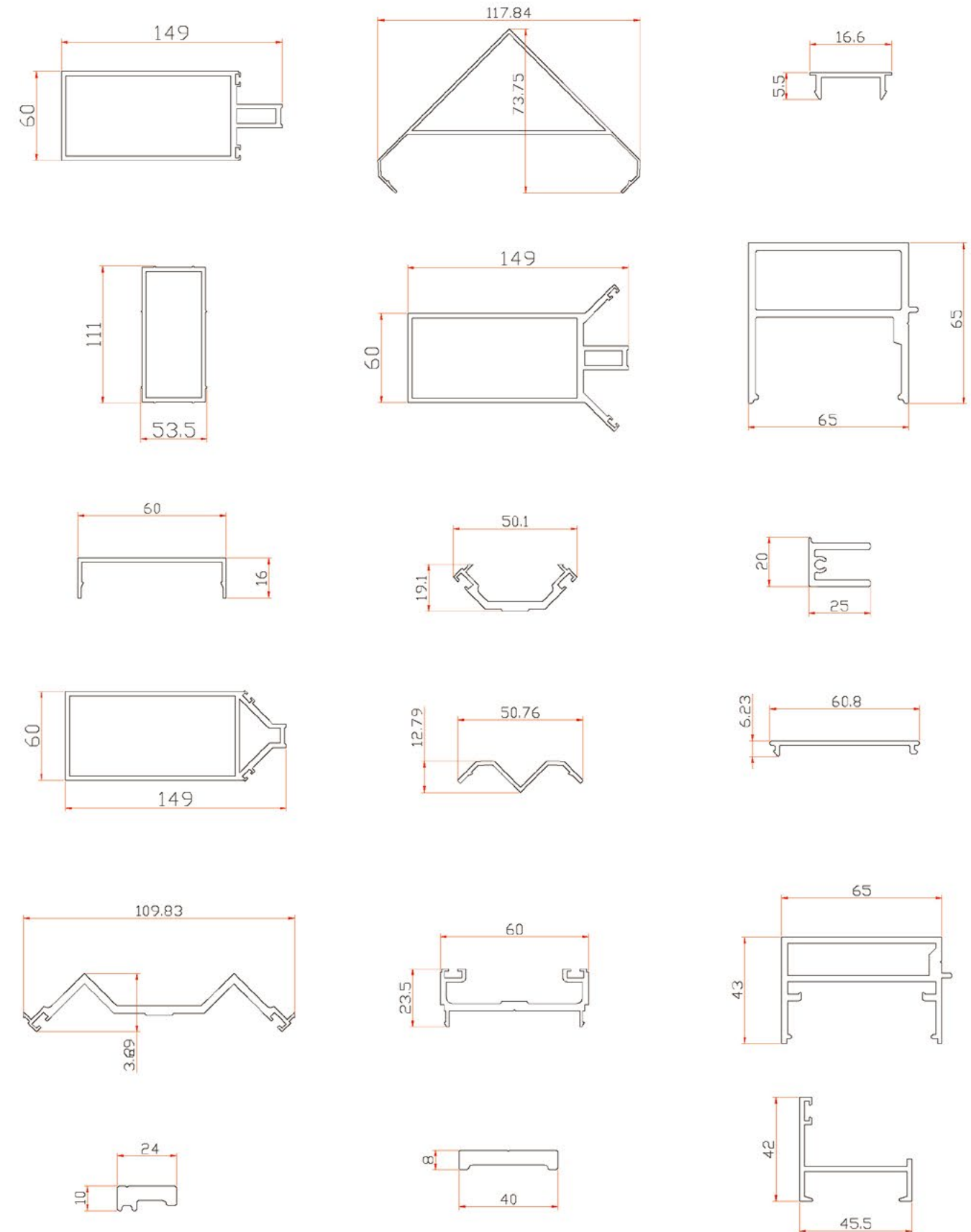
Aluminum extrusions from our architectural systems are available in a variety of finishing which contains mill finish, anodized, electrophoresis, powder coating, PVDF coating and wood grain. If you are looking for trustworthy aluminum curtain wall suppliers, don't hesitate to contact us.



We have the most professional engineering team. If our existing unitized aluminium facade systems are not suitable for your special purpose, our experienced engineers can also help you to design your own curtain wall aluminium profiles and realize custom aluminium extrusions.



Curtain Wall Profile Drawing Design



OUR PROJECT

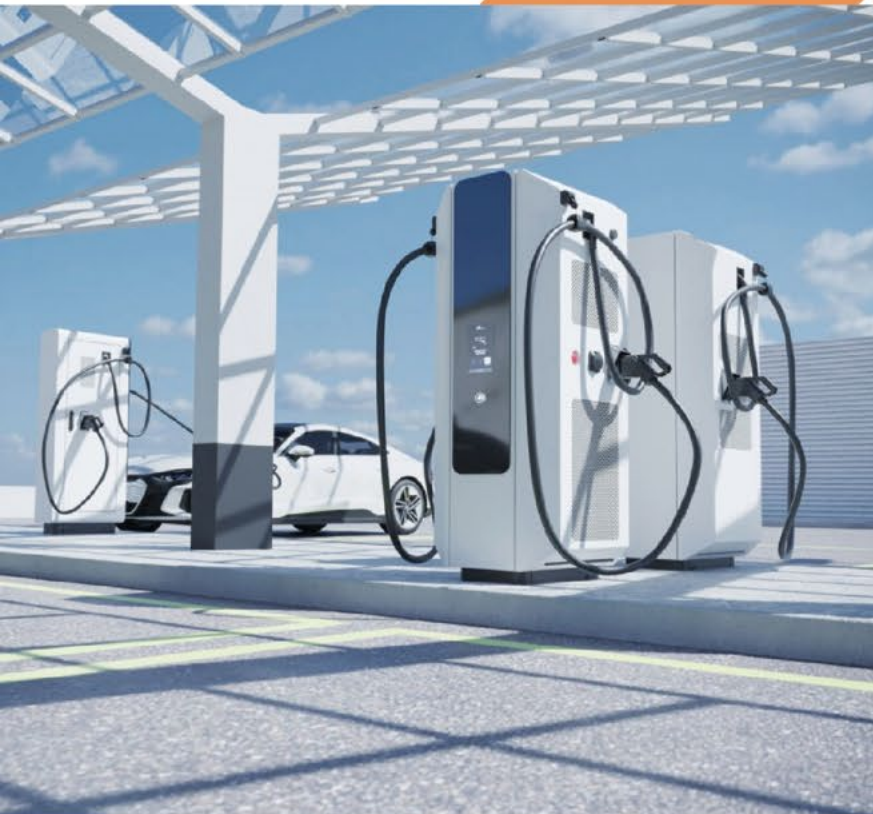
Building Construction Projects



Heat Sinks Project

Solar Energy Inverter

As the core of the photovoltaic power station, the inverter's life affects the normal operation of the entire power station, and the heat dissipation performance of the inverter is crucial to the life of the device. The components in the inverter have a rated operating temperature. When the inverter continues to work, the heat of the components keeps gathering inside the cavity, and the temperature will become higher and higher. Aluminum heat sink will solve this problem perfectly.



Car Charging Station

As the low-carbon economy has become the main direction of future development, new energy vehicles have also emerged as the times require. New energy vehicles have many advantages such as energy saving, emission reduction, and environmental protection. How to quickly replenish electric energy for new energy vehicles in a relatively short period of time has very high requirements for charging stations. The charging demand is of course as fast as possible. However, as the charging speed increases, the current and voltage will increase linearly, which will lead to an increase in the power of the inductance module of the charging pile, which will easily cause safety accidents. Therefore, it is very important to use a radiator to dissipate heat.

Industrial Aluminum Profiles Project



1 Custom made

According to the characteristics of logistics operation and the needs of use, develop brand new exclusive car model.

2 Lightweight car body, low carbon, environmental friendly.

The whole boxcar structure uses high strength Aluminum profile, under the premise of ensuring the strength and safety performance of vehicles, reduce the vehicle kerb mass as much as possible, so as to improve the dynamic, achieve pure electric drive and zero emissions.

3 Recyclable repeatedly.

Aluminum is not only high strength and rigidity, but also can be recycled, it has the longest metal life cycle. Therefore, the aluminum carriage has good safety performance, long service life and low cost.

WHY CHOOSE US

Guangxi bauxite resources with the largest reserves and best quality in the country.
Long-term close cooperation with the famous Guangxi Branch of CHALCO.
Possess high-quality aluminum liquid raw materials.



OUR MARKET

We're market-oriented, we carve every product with a craftsmanship spirit and win the trust of every customer with professional service. Such as Solar Edge, JABIL, CATL, YKK AP, etc.

Our products have many varieties, beautiful appearance, high precision and excellent performance, and they are exported to dozens of countries and regions in North America, South America, Europe, Africa, the Middle East, East Asia, Southeast Asia and so on.

